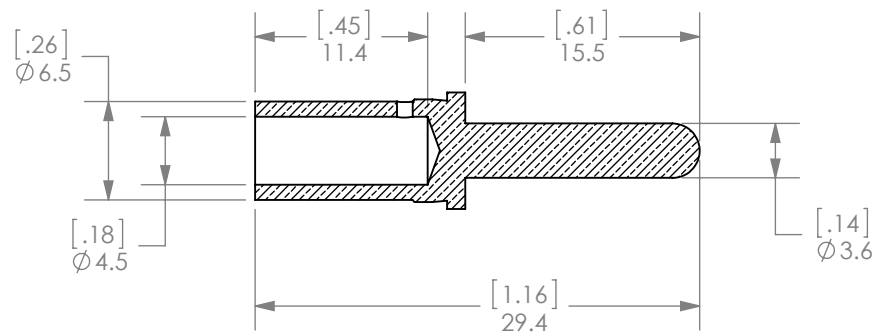
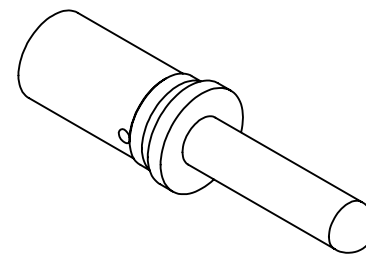
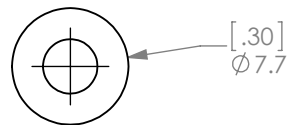
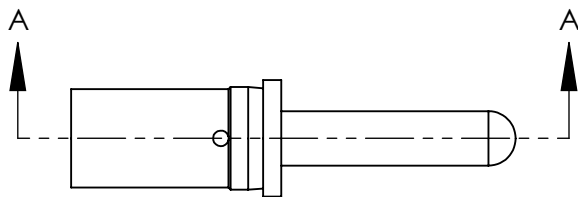


THE INFORMATION CONTAINED IN THIS DRAWING IS THE SOLE PROPERTY OF ANDERSON POWER PRODUCTS. ANY REPRODUCTION IN PART OR WHOLE WITHOUT THE WRITTEN PERMISSION OF ANDERSON POWER PRODUCTS IS PROHIBITED.

**Copyright 2015**

ANDERSON POWER PRODUCTS RESERVES THE RIGHT TO ALTER PRODUCT TYPES, THEIR TECHNICAL DATA, DIMENSION, STYLE AND ACCESSORIES WITHOUT PRIOR NOTIFICATION.



SECTION A-A

- NOTES:  
 1. CONTACTS FOR USE IN 5 POSITION MID POWER SPEC PAK® ONLY  
 2. CRIMP CONTACTS ONTO WIRE PRIOR TO INSERTION INTO HOUSING  
 3. MATERIAL: COPPER  
 4. PLATING: SILVER OVER NICKEL

DIMENSIONS ARE IN: MM [INCH]		<i>APPROVALS</i>		<b>ANDERSON POWER PRODUCTS</b> TITLE CAT. NO. PP08SGH: #8 PIN HOT PLUG/ GROUNDING CRIMP CONTACT
UNLESS OTHERWISE STATED		DRAWN		
TOLERANCES:		CMS	4/27/2015	
DECIMALS (INCH)	DECIMALS (MM)	CHECKED		
.XX ± .02	.X ± .5	JYL	4/28/2015	
SURFACE FINISH:		MFG APPRV		
MACHINED	3.2µ [128µin]	LLD	4/28/2015	
MOLDED	1.6µ [64µin]	QC APPRV		
MATERIAL:		UFN	4/28/2015	
SEE NOTES		ENG APPRV		
FINISH:		CLY	4/28/2015	
SEE NOTES		SIZE	A	
		DWG NO.	115436S2	
		REV.	0	
		SCALE	NONE	
		CADFILE	04504	
		SHEET	1 OF 1	

REV.	DESCRIPTION	APPRV	DATE
REVISIONS			