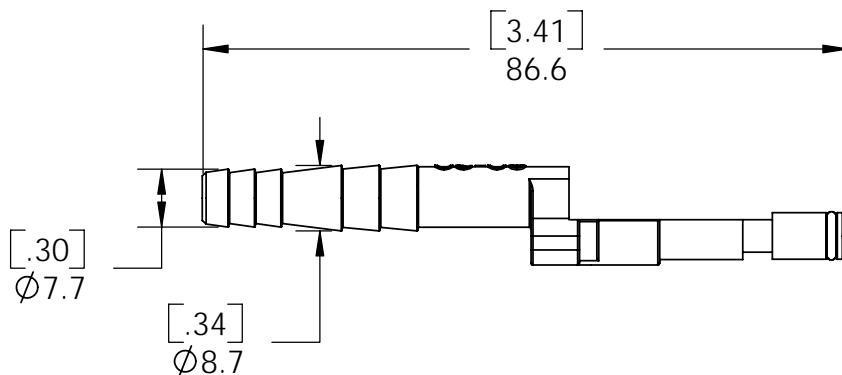
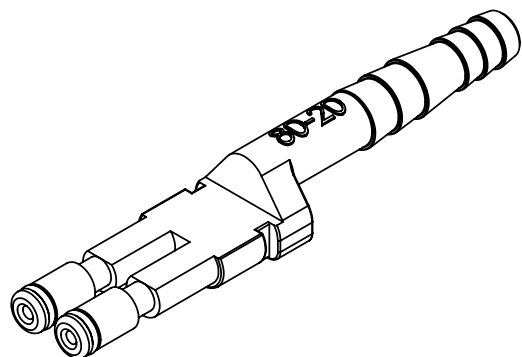
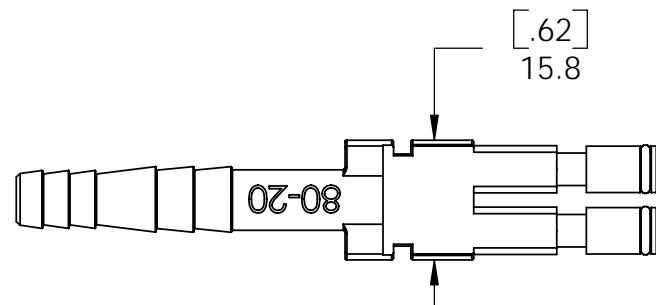
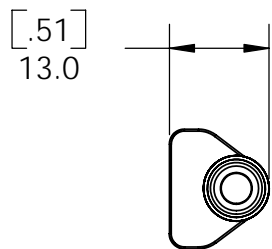


THE INFORMATION CONTAINED IN THIS DRAWING IS THE SOLE PROPERTY OF ANDERSON POWER PRODUCTS. ANY REPRODUCTION IN PART OR WHOLE WITHOUT THE WRITTEN PERMISSION OF ANDERSON POWER PRODUCTS IS PROHIBITED.

Copyright 2006

ANDERSON POWER PRODUCTS RESERVES THE RIGHT TO ALTER PRODUCT TYPES, THEIR TECHNICAL DATA, DIMENSION, STYLE AND ACCESSORIES WITHOUT PRIOR NOTIFICATION.



|                         |               |          |                  |              |
|-------------------------|---------------|----------|------------------|--------------|
| DIMENSIONS ARE IN:      |               | MM[INCH] | APPROVALS        |              |
| UNLESS OTHERWISE STATED |               |          | DRAWN            | AMS 01/06/06 |
| TOLERANCES:             |               |          | CHECKED          | DJD 01/10/06 |
| DECIMALS (INCH)         | DECIMALS (MM) | ANGLES   | MFG APP          | CHB 01/09/06 |
| XX ± .02                | X ± .5        | ± 2°     | QC APP           | UFN 01/09/06 |
| SURFACE FINISH:         |               |          | ENG APP          | DAM 01/06/06 |
| MACHINED                | 128 [3.2]     | ✓        | SIZE A/A4        |              |
| MOLDED                  | 64 [1.6]      | ✓        | DWG NO. E80-20S1 |              |
| MATERIAL: SEE B/M       |               |          | REV. 1           |              |
| FINISH: SEE B/M         |               |          | SCALE NONE       |              |

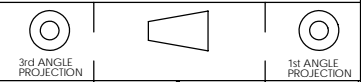
**ANDERSON POWER PRODUCTS**

**SALES OUTLINE**  
TWIN AIR TUBE (MALE)  
FOR 80A DIN CONNECTORS

CADFILE 02490

SHEET 1 OF 1

|      |                               |          |        |
|------|-------------------------------|----------|--------|
| 1    | ECRN 13956 - CHANGES PER ISIR | AMS      | 2-9-06 |
| REV. | DESCRIPTION OF CHANGES        | APPROVED | DATE   |



-CAD GENERATED DRAWING-  
DO NOT MANUALLY UPDATE  
DO NOT SCALE