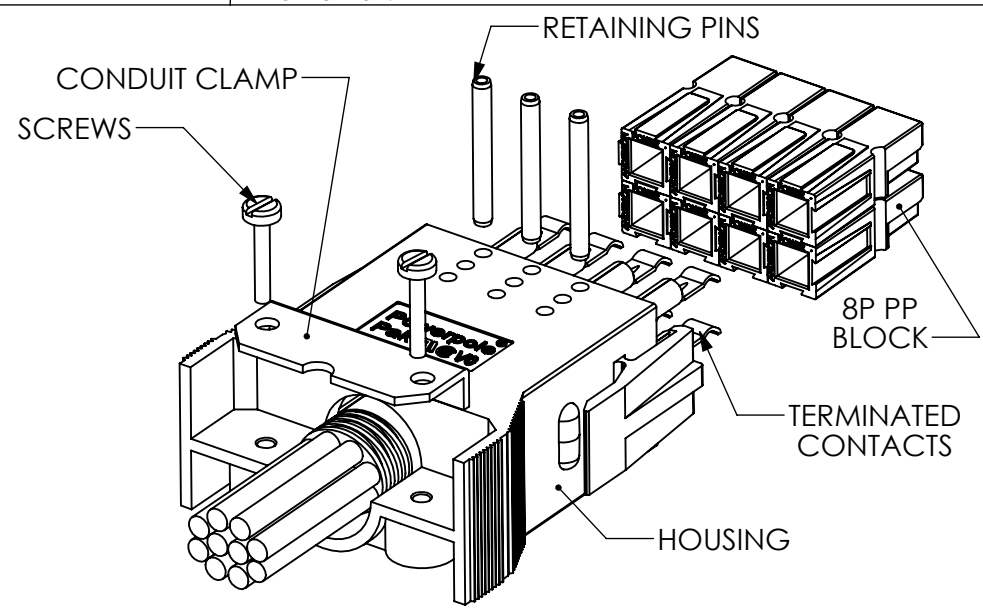
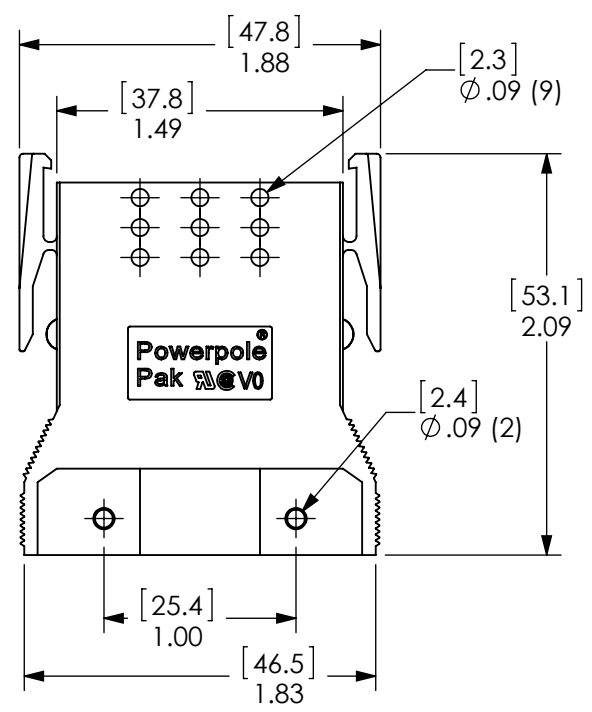


8 7 6 5 4 3 2 1

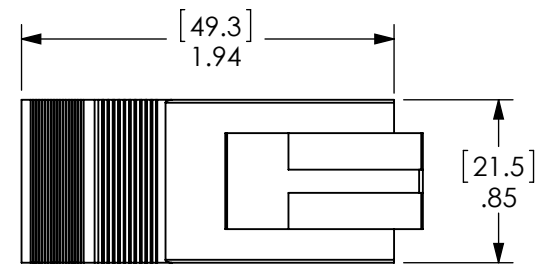
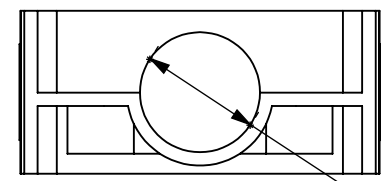
THE INFORMATION CONTAINED IN THIS DRAWING IS THE SOLE PROPERTY OF ANDERSON POWER PRODUCTS. ANY REPRODUCTION IN PART OR WHOLE WITHOUT THE WRITTEN PERMISSION OF ANDERSON POWER PRODUCTS IS PROHIBITED.

Copyright 1999

ANDERSON POWER PRODUCTS RESERVES THE RIGHT TO ALTER PRODUCT TYPES, THEIR TECHNICAL DATA, DIMENSION, STYLE AND ACCESSORIES WITHOUT PRIOR NOTIFICATION.



TYPICAL ASSEMBLY- REFER TO CATALOG FOR AVAILABLE CONFIGURATIONS



2	ECRN-15720 UPDATE DRAWING	TWE	9/23/2014
1	ECRN-13769 Ø .09 WAS Ø .08	DJD	12/16/04
REV.	DESCRIPTION	APPRV	DATE

REVISIONS

DIMENSIONS ARE IN:	INCH [MM]	APPROVALS		 ANDERSON POWER PRODUCTS	
UNLESS OTHERWISE STATED		DRAWN	CMS 8/2/1999		
TOLERANCES:		CHECKED	DJD 8/3/1999		
DECIMALS (INCH) DECIMALS (MM) ANGLES		MFG APPRV	CHB 8/3/1999		
SURFACE FINISH:		QC APPRV	RO 9/9/1999	TITLE CATALOG NUMBER 1460G3 2X4 POWERPOLE PAK HOUSING PLUG WITH LATCH	
MACHINED 128µin [3.2µ]		ENG APPRV	UFN 8/3/1999		
MOLDED 64µin [1.6µ]		SIZE	A		
MATERIAL: POLYCARBONATE		DWG NO.	114165S3	REV.	2
FINISH: NONE		SCALE	NONE	CADFILE	01090
 3rd ANGLE PROJECTION		-CAD GENERATED DRAWING- DO NOT MANUALLY UPDATE DO NOT SCALE		SHEET	1 OF 1

8 7 6 5 4 3 2 1