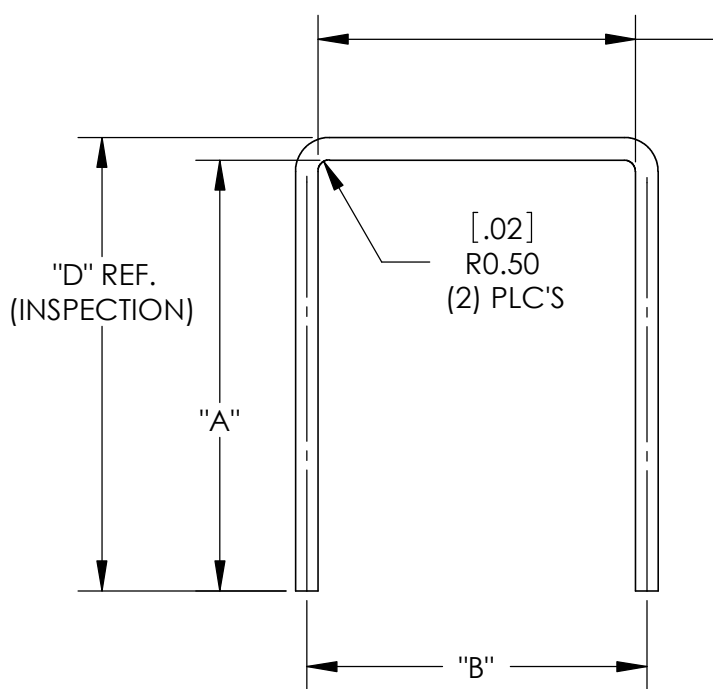


THE INFORMATION CONTAINED IN THIS DRAWING IS THE SOLE PROPERTY OF ANDERSON POWER PRODUCTS. ANY REPRODUCTION IN PART OR WHOLE WITHOUT THE WRITTEN PERMISSION OF ANDERSON POWER PRODUCTS IS PROHIBITED.

Copyright 2007

ANDERSON POWER PRODUCTS RESERVES THE RIGHT TO ALTER PRODUCT TYPES, THEIR TECHNICAL DATA, DIMENSION, STYLE AND ACCESSORIES WITHOUT PRIOR NOTIFICATION.



"C" REF.
(INSPECTION)

"D" REF.
(INSPECTION)

[.02]
R0.50
(2) PLC'S

Part #	Configuration	"A"		"B"		"C"		"D"	
		mm	in	mm	in	mm	in	mm	in
P1	1X1 Short	12.0	0.47	7.0	0.28	6.0	0.24	13.0	0.51
P2	1X2 Short	12.0	0.47	14.5	0.57	13.5	0.53	13.0	0.51
P3	1x3 Short	12.0	0.47	22.5	0.89	21.5	0.85	13.0	0.51
P4	3x2 Short	28.0	1.10	14.5	0.57	13.5	0.53	29.0	1.14
P5									
P6	2x2 Short	20.0	0.79	14.5	0.57	13.5	0.53	21.0	0.83
P7	1x4 Short	12.0	0.47	30.5	1.20	29.5	1.16	13.0	0.51
P8	1x6 Short	12.0	0.47	46.5	1.83	45.5	1.79	13.0	0.51
P9	2x2 Long	23.0	0.91	14.5	0.57	13.5	0.53	24.1	0.95
P10	2x1 Short	20.0	0.79	7.0	0.28	6.0	0.24	21.0	0.83
P11	1X2 Long	17.0	0.67	14.5	0.57	13.5	0.53	18.0	0.71
P13	1x6 Long	17.0	0.67	46.5	1.83	45.5	1.79	18.0	0.71

[.039]
Ø1.00

DIMENSIONS ARE IN:		MM[INCH]	APPROVALS		ANDERSON POWER PRODUCTS	
UNLESS OTHERWISE STATED			DRAWN	LH	10/24/06	TITLE PP 15/45 STAPLES FOR PCB ASSEMBLIES
TOLERANCES:			CHECKED	DJD	10/31/06	
DECIMALS (INCH)	DECIMALS (MM)	ANGLES	MFG APP	CHB	10/31/06	
.XX ± .015	.X ± .1	±.5°	QC APP			
.XXX ± .005	.XX ± .05		ENG APP	DAM	10/31/06	SIZE A/A4
SURFACE FINISH:					DWG NO.	REV.
MACHINED 128 [3.2] ✓					114555P	5
MOLDED 64 [1.6] ✓					SCALE	SHEET
MATERIAL: PRE-PLATED COPPER ALLOY					3X	1 OF 1
FINISH: TIN PLATE					CADFILE	
3rd ANGLE PROJECTION			-CAD GENERATED DRAWING- DO NOT MANUALLY UPDATE DO NOT SCALE		02603	

REV.	DESCRIPTION OF CHANGES	APPROVED	DATE
5	ECN 2015-0010	CPD	08/12/2016
4	ECRN 14270 - ADD INSP. DIMENSIONS	AMS	05/22/08
3	ECRN 14212 - UPDATE DIMENSION SCHEME	AMS	01/21/08
2	ECRN 14191 - ADD -P14 TO TABLE	AMS	10/04/07
1	- ADD -P11 THRU -P13 TO TABLE	LH	02/27/07