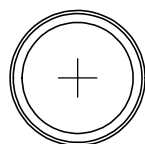
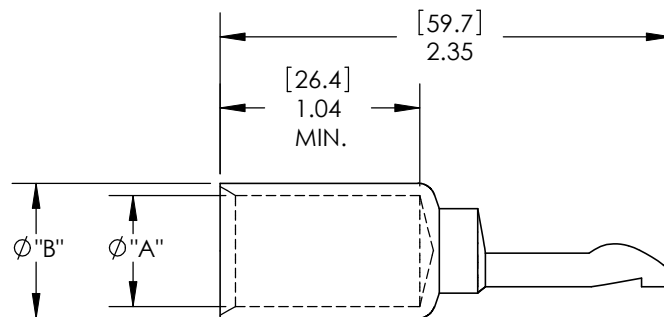
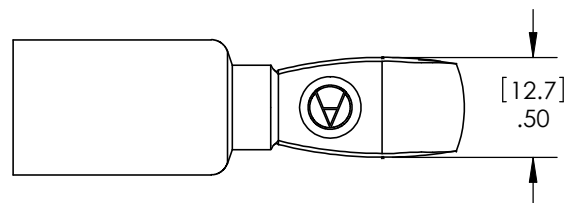
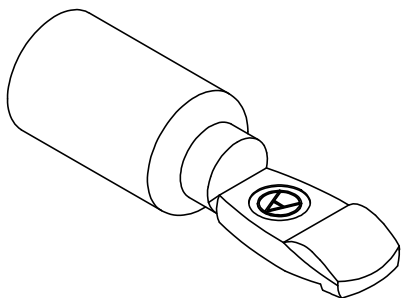


THE INFORMATION CONTAINED IN THIS DRAWING IS THE SOLE PROPERTY OF ANDERSON POWER PRODUCTS. ANY REPRODUCTION IN PART OR WHOLE WITHOUT THE WRITTEN PERMISSION OF ANDERSON POWER PRODUCTS IS PROHIBITED.

Copyright 2009

ANDERSON POWER PRODUCTS RESERVES THE RIGHT TO ALTER PRODUCT TYPES, THEIR TECHNICAL DATA, DIMENSION, STYLE AND ACCESSORIES WITHOUT PRIOR NOTIFICATION.

CAT. NO.	WIRE SIZE	"A"		"B"		FOR USE WITH
		IN	MM	IN	MM	
1328G1	#2/0 AWG	0.49	12.4	0.64	16.3	PP180 HSGS ONLY
1328G2	#3/0 AWG	0.58	14.7	0.70	17.8	



DIMENSIONS ARE IN: INCH[MM]		APPROVALS		ANDERSON POWER PRODUCTS	
UNLESS OTHERWISE STATED		DRAWN	AMS 04/10/09	PP180 CONTACTS FOR #2/0 & #3/0 AWG	
TOLERANCES:		CHECKED	DJD 04/13/09		
DECIMALS (INCH)	DECIMALS (MM)	ANGLES			
.XX ±.02	.X ±.5	±2°			
SURFACE FINISH:		MFG APP	CHB 04/13/09	SIZE	DWG NO.
MACHINED	128 [3.2] ✓	QC APP	UFN 04/13/09	A/A4	114857S1
MOLDED	64 [1.6] ✓	ENG APP	DAM 04/10/09	SCALE	CADFILE
MATERIAL: COPPER ALLOY				NONE	02895
FINISH: SILVER PLATE				REV.	0
		CAD GENERATED DRAWING - DO NOT MANUALLY UPDATE - DO NOT SCALE		SHEET	1 OF 1

REV.	DESCRIPTION OF CHANGES	APPROVED	DATE
*	*****	***	*****

