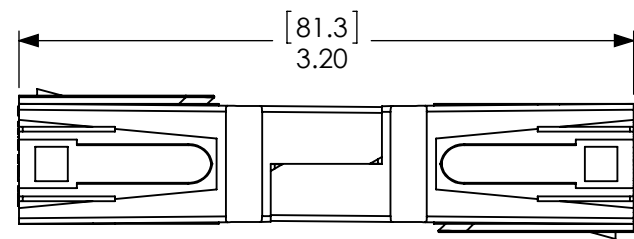
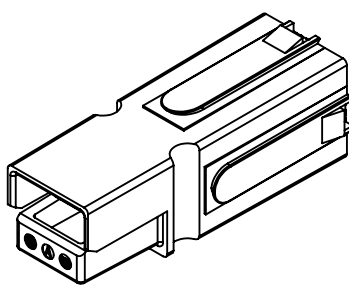
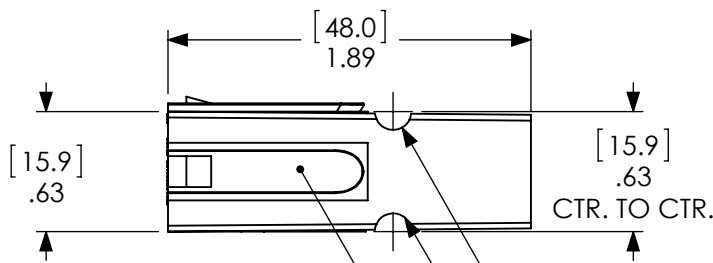


THE INFORMATION CONTAINED IN THIS DRAWING IS THE SOLE PROPERTY OF ANDERSON POWER PRODUCTS. ANY REPRODUCTION IN PART OR WHOLE WITHOUT THE WRITTEN PERMISSION OF ANDERSON POWER PRODUCTS IS PROHIBITED.

**Copyright 2001**

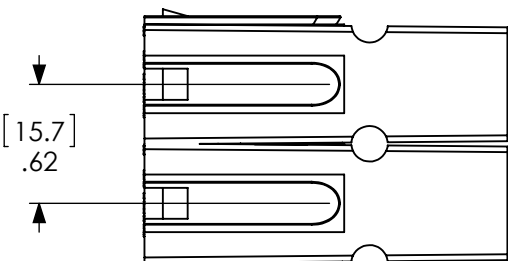
ANDERSON POWER PRODUCTS RESERVES THE RIGHT TO ALTER PRODUCT TYPES, THEIR TECHNICAL DATA, DIMENSION, STYLE AND ACCESSORIES WITHOUT PRIOR NOTIFICATION.



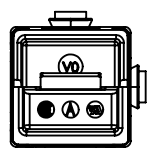
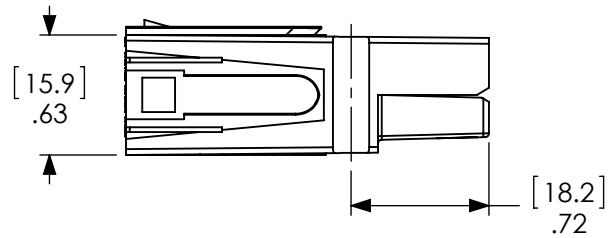
MATED PAIR OF HOUSINGS

DOVETAILS ALLOW STACKING IN VERTICAL, HORIZONTAL, OR IN BLOCK CONFIGURATIONS.

WHEN MATED SIDE TO SIDE, HALF-ROUNDS ALIGN TO FORM A SLOT FOR ROLL PIN INSERTION (OPTIONAL).



BLOCKED CONNECTOR SPACING



CAT. NO.	COLOR
75LOKBLU	BLUE
75LOKBLK	BLACK
75LOKWHT	WHITE
75LOKGRN	GREEN
75LOKRED	RED

NOTES:

1. SPRING/HOUSING ASSEMBLIES ARE UL RECOGNIZED PER FILE E26226 AND CSA CERTIFIED PER LR25154.
2. THESE HOUSING ASSEMBLIES ACCOMODATE ANDERSON CONTACTS FOR WIRE RANGES FROM #12 AWG TO #6 AWG.
3. FOR ASSEMBLY INSTRUCTIONS, SEE DOCUMENT 1S1072.
4. HOUSINGS: POLYCARBONATE, UL94V0.  
SPRING: STAINLESS STEEL  
FOR OTHER COLORS, CONSULT ANDERSON POWER PRODUCTS

DIMENSIONS ARE IN: INCH [MM]		<b>APPROVALS</b>		<b>ANDERSON POWER PRODUCTS</b>		
UNLESS OTHERWISE STATED		DRAWN				
TOLERANCES:		CMS	5/18/2001	SIZE A		
DECIMALS (INCH)	DECIMALS (MM)	CHECKED				
.XX ± .02	.X ± .5	DJD	5/23/2001	REV. 2		
ANGLES ±2°		MFG APPRV				
SURFACE FINISH:		UFN	5/25/2001	CADFILE 01443		
MACHINED	128µin [3.2µ]	QC APPRV				
MOLDED	64µin [1.6µ]	CHB	5/25/2001	-CAD GENERATED DRAWING- DO NOT MANUALLY UPDATE DO NOT SCALE		
MATERIAL: SEE NOTES		ENG APPRV				
FINISH: AS MOLDED		RPO	5/23/2001			

REV.	DESCRIPTION	APPRV	DATE
2	ECRN-15089 UPDATE	TWE	3/16/12
1	ECRN-14018 ADDED 75LOKRED	AF	5/25/06
REVISIONS			