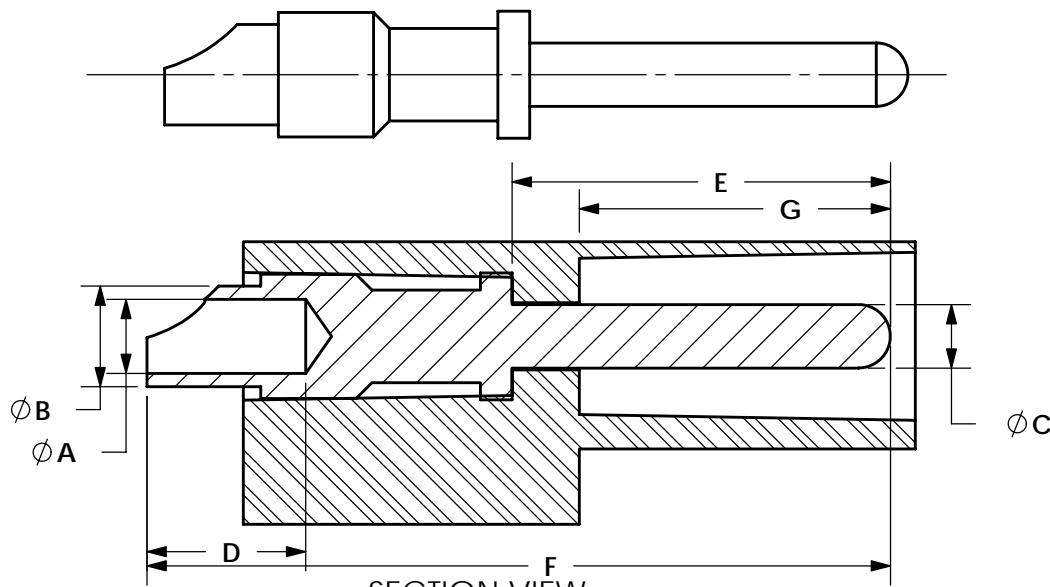


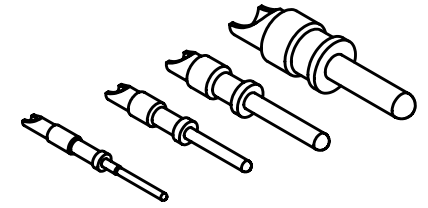
THE INFORMATION CONTAINED IN THIS DRAWING IS THE SOLE PROPERTY OF ANDERSON POWER PRODUCTS. ANY REPRODUCTION IN PART OR WHOLE WITHOUT THE WRITTEN PERMISSION OF ANDERSON POWER PRODUCTS IS PROHIBITED.

Copyright 2006

ANDERSON POWER PRODUCTS RESERVES THE RIGHT TO ALTER PRODUCT TYPES, THEIR TECHNICAL DATA, DIMENSION, STYLE AND ACCESSORIES WITHOUT PRIOR NOTIFICATION.



ACTUAL SIZE



SECTION VIEW AS LOADED INTO HOUSING

DIM PART NO.	A IN MM	B IN MM	C IN MM	D IN MM	E IN MM	F IN MM	G IN MM	DESCRIPTION
PS08SSN	.19 4.8	.24 6.0	.14 3.6	.39 10.0	.56 14.3	1.22 31.0	.40 10.2	#8 AWG- STD. LENGTH
PS08FSN	.19 4.8	.24 6.0	.14 3.6	.39 10.0	.61 15.5	1.27 32.2	.45 11.4	#8 AWG- PRE-MATE LENGTH
PS12SSN	.11 2.8	.15 3.8	.09 2.4	.24 6.0	.56 14.3	1.11 28.1	.43 10.9	#12 AWG- STD. LENGTH
PS12FSN	.11 2.8	.15 3.8	.09 2.4	.24 6.0	.59 15.0	1.13 28.8	.46 11.7	#12 AWG- PRE-MATE LENGTH
PS12LSN	.11 2.8	.15 3.8	.09 2.4	.24 6.0	.52 13.2	1.06 27.0	.39 9.9	#12 AWG POST-MATE
PS12SGH	.11 2.8	.15 3.8	.09 2.4	.24 6.0	.56 14.3	1.11 28.1	.43 10.9	#12 AWG- STD. LENGTH, HOT PLUG
PS12FGH	.11 2.8	.15 3.8	.09 2.4	.24 6.0	.59 15.0	1.13 28.8	.46 11.7	#12 AWG- PRE-MATE LENGTH, HOT PLUG
PS12LGH	.11 2.8	.15 3.8	.09 2.4	.24 6.0	.52 13.2	1.06 27.0	.39 9.9	#12 AWG POST-MATE, HOT PLUG
PS16SSN	.08 2.0	.15 2.9	.06 1.6	.22 5.5	.45 11.5	1.00 25.5	.34 8.6	#16AWG- STD. LENGTH
PS16FSN	.08 2.0	.15 2.9	.06 1.6	.22 5.5	.60 15.3	1.15 29.3	.49 12.4	#16 AWG- PRE-MATE LENGTH
PS16LSN	.08 2.0	.15 2.9	.06 1.6	.22 5.5	.41 10.5	.96 24.5	.30 7.6	#16 AWG POST-MATE
PS20SGN	.05 1.3	.08 2.1	.04 1.0	.20 5.0	.45 11.5	1.02 25.8	.32 8.1	#20 AWG- STD. LENGTH
PS20FGN	.05 1.3	.08 2.1	.04 1.0	.20 5.0	.60 15.3	1.17 29.6	.47 11.9	#20 AWG- PRE-MATE LENGTH
PS20LGN	.05 1.3	.08 2.1	.04 1.0	.20 5.0	.40 10.2	.96 24.5	.27 6.9	#20 AWG POST-MATE

NOTES:

1. PS08 CONTACTS FOR USE IN 75 AMP POWER DRAWER ONLY
2. SOLDER CONTACTS ONTO WIRE PRIOR TO INSERTION INTO HOUSING
3. MATERIALS: PIN BODY- BRASS
4. PLATING: SPECIFIED BY THE LAST TWO DIGITS OF THE PART NUMBER.
I.E. "SN" DENOTES SILVER OVER NICKEL
"GN" DENOTES GOLD OVER NICKEL
"GH" DENOTES GOLD OVER NICKEL AND HOT PLUGGABLE

DIMENSIONS ARE IN: INCH[mm]	DRAWN CMS 3/2/06	<p>ANDERSON POWER PRODUCTS</p> <p>TITLE</p> <p>PIN SOLDER CUP CONTACTS FOR POWER DRAWER SERIES CONNECTORS</p> <p>SIZE A/A4</p> <p>DWG NO. 114563S1</p> <p>REV. 1</p>		
UNLESS OTHERWISE STATED TOLERANCES: DECIMALS (INCH) DECIMALS (MM) ANGLES .XX ± .02 .X ± .5 ± 2°	CHECKED DJD 3/8/06			
SURFACE FINISH: MACHINED 128 [3.2] ✓ MOLDED 64 [1.6] ✓	MFG APP CHB 3/2/06			
MATERIAL: SEE NOTES	QC APP JA 3/8/06			
FINISH: SEE NOTES	ENG APP DAM 3/2/06			
	PROD. MGR MK 3/2/06			
	-CAD GENERATED DRAWING- DO NOT MANUALLY UPDATE DO NOT SCALE	SCALE NONE	CADFILE 02177	SHEET 1 OF 1

1	ECRN 14146	CMS	5/10/07
REV.	DESCRIPTION OF CHANGES	APPROVED	DATE