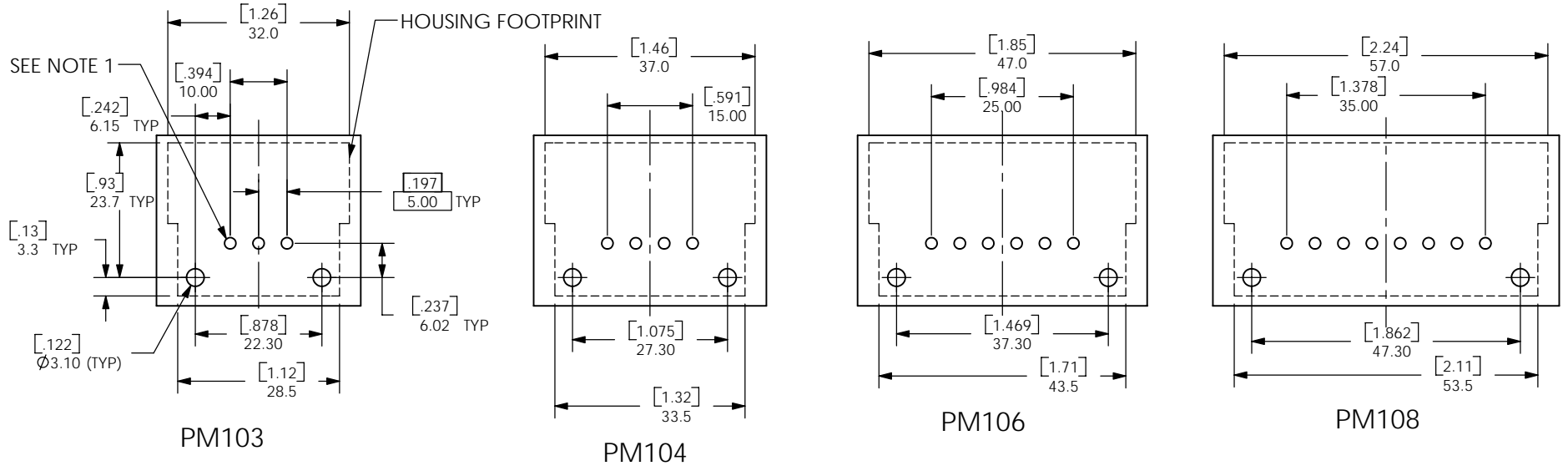


THE INFORMATION CONTAINED IN THIS DRAWING IS THE SOLE PROPERTY OF ANDERSON POWER PRODUCTS. ANY REPRODUCTION IN PART OR WHOLE WITHOUT THE WRITTEN PERMISSION OF ANDERSON POWER PRODUCTS IS PROHIBITED.

Copyright 2006

ANDERSON POWER PRODUCTS RESERVES THE RIGHT TO ALTER PRODUCT TYPES, THEIR TECHNICAL DATA, DIMENSION, STYLE AND ACCESSORIES WITHOUT PRIOR NOTIFICATION.

PCB LAYOUT FOR 1-ROW RIGHT ANGLE CONNECTORS



- NOTES:
1. Ø2.00[.078] SUGGESTED FINISHED HOLE DIAMETER PER CONTACT TERMINATION
 2. HOUSING FOOTPRINT INCLUDES CLEARANCE FOR LATCHES, HOLE BRACKET AND SNAP-IN BRACKETS

DIMENSIONS ARE IN:		MM[INCH]	APPROVALS		 ANDERSON POWER PRODUCTS
UNLESS OTHERWISE STATED			DRAWN	CMS 6/1/06	
TOLERANCES:			CHECKED	DJD 6/12/06	TITLE
DECIMALS (INCH)	DECIMALS (MM)	ANGLES	MFG APP	CHB 6/9/06	POWERMOD PCB LAYOUT- RIGHT ANGLE CONNECTORS
.XX ± .05	.X ± .5	±2°	QC APP	UFN 6/9/06	
SURFACE FINISH:			ENG APP	DAM 6/9/06	SIZE
MACHINED 128 [3.2] ✓					A/A4
MOLDED 64 [1.6] ✓					DWG NO.
MATERIAL: N/A					114661S1
FINISH: N/A					REV.
					0
			-CAD GENERATED DRAWING- DO NOT MANUALLY UPDATE DO NOT SCALE		SCALE
					NONE
					CADFILE
					02537
					SHEET
					1 OF 3

REV.	DESCRIPTION OF CHANGES	APPROVED	DATE
8			
7			
6			
5			

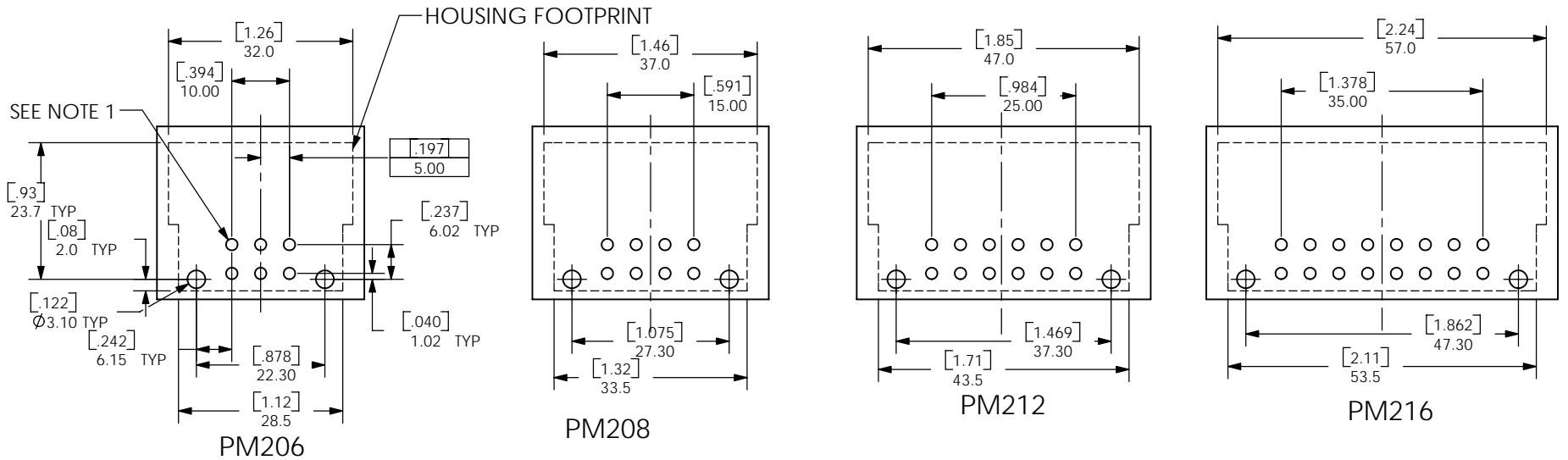


THE INFORMATION CONTAINED IN THIS DRAWING IS THE SOLE PROPERTY OF ANDERSON POWER PRODUCTS. ANY REPRODUCTION IN PART OR WHOLE WITHOUT THE WRITTEN PERMISSION OF ANDERSON POWER PRODUCTS IS PROHIBITED.

Copyright 2006

ANDERSON POWER PRODUCTS RESERVES THE RIGHT TO ALTER PRODUCT TYPES, THEIR TECHNICAL DATA, DIMENSION, STYLE AND ACCESSORIES WITHOUT PRIOR NOTIFICATION.

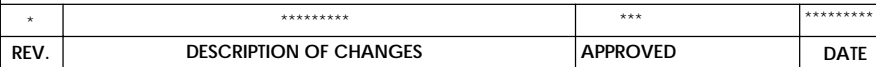
PCB LAYOUT FOR 2-ROW RIGHT ANGLE CONNECTORS



- NOTES:
1. Ø2.00[.078] SUGGESTED FINISHED HOLE DIAMETER PER CONTACT TERMINATION
 2. HOUSING FOOTPRINT INCLUDES CLEARANCE FOR LATCHES, HOLE BRACKET AND SNAP-IN BRACKETS

DIMENSIONS ARE IN:		MM[INCH]	APPROVALS		 ANDERSON POWER PRODUCTS TITLE POWERMOD PCB LAYOUT- RIGHT ANGLE CONNECTORS		
UNLESS OTHERWISE STATED			DRAWN	CMS 6/1/06			
TOLERANCES:			CHECKED	DJD 6/12/06			
DECIMALS (INCH)	DECIMALS (MM)	ANGLES	MFG APP	CHB 6/9/06			
.XX ± .05	.X ± .5	±2°	QC APP	UFN 6/9/06			
SURFACE FINISH:			ENG APP	DAM 6/9/06	SIZE	DWG NO.	REV.
MACHINED		128 [3.2] ✓			A/A4	114661S1	0
MOLDED		64 [1.6] ✓			NONE	02537	2 OF 3
MATERIAL: N/A					SHEET		
FINISH: N/A					SCALE		
					NONE		
					CADFILE		
					02537		
					SHEET		
					2 OF 3		

REV.	DESCRIPTION OF CHANGES	APPROVED	DATE
8			
7			
6			
5			



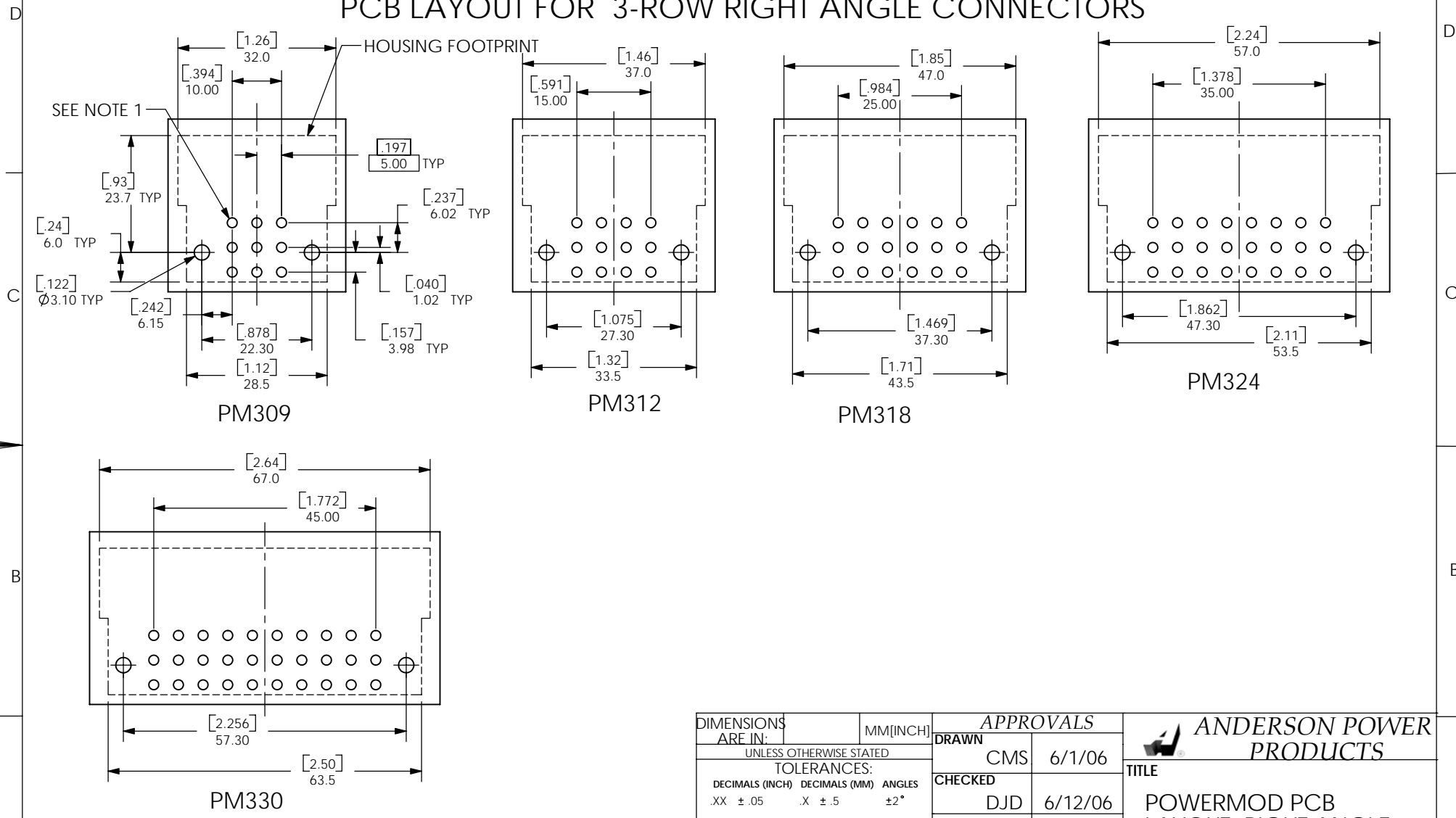
CAD GENERATED DRAWING- DO NOT MANUALLY UPDATE DO NOT SCALE

THE INFORMATION CONTAINED IN THIS DRAWING IS THE SOLE PROPERTY OF ANDERSON POWER PRODUCTS. ANY REPRODUCTION IN PART OR WHOLE WITHOUT THE WRITTEN PERMISSION OF ANDERSON POWER PRODUCTS IS PROHIBITED.

Copyright 2006

ANDERSON POWER PRODUCTS RESERVES THE RIGHT TO ALTER PRODUCT TYPES, THEIR TECHNICAL DATA, DIMENSION, STYLE AND ACCESSORIES WITHOUT PRIOR NOTIFICATION.

PCB LAYOUT FOR 3-ROW RIGHT ANGLE CONNECTORS



- NOTES:
1. $\varnothing 2.00[.078]$ SUGGESTED FINISHED HOLE DIAMETER PER CONTACT TERMINATION
 2. HOUSING FOOTPRINT INCLUDES CLEARANCE FOR LATCHES, HOLE BRACKET AND SNAP-IN BRACKETS

DIMENSIONS ARE IN:		MM[INCH]	APPROVALS		ANDERSON POWER PRODUCTS		
UNLESS OTHERWISE STATED			DRAWN	CMS 6/1/06		TITLE POWERMOD PCB LAYOUT- RIGHT ANGLE CONNECTORS	
TOLERANCES:			CHECKED	DJD 6/12/06			
DECIMALS (INCH)	DECIMALS (MM)	ANGLES	MFG APP	CHB 6/9/06			
.XX ± .05	.X ± .5	±2°	QC APP	UFN 6/9/06			
SURFACE FINISH:			ENG APP	DAM 6/9/06	SIZE	DWG NO.	REV.
MACHINED 128 [3.2] ✓					A/A4	114661S1	0
MOLDED 64 [1.6] ✓							
MATERIAL: N/A							
FINISH: N/A							
3rd ANGLE PROJECTION			CAD GENERATED DRAWING- DO NOT MANUALLY UPDATE DO NOT SCALE		SCALE	CADFILE	SHEET
					NONE	02537	3 OF 3

REV.	DESCRIPTION OF CHANGES	APPROVED	DATE
8			
7			
6			
5			