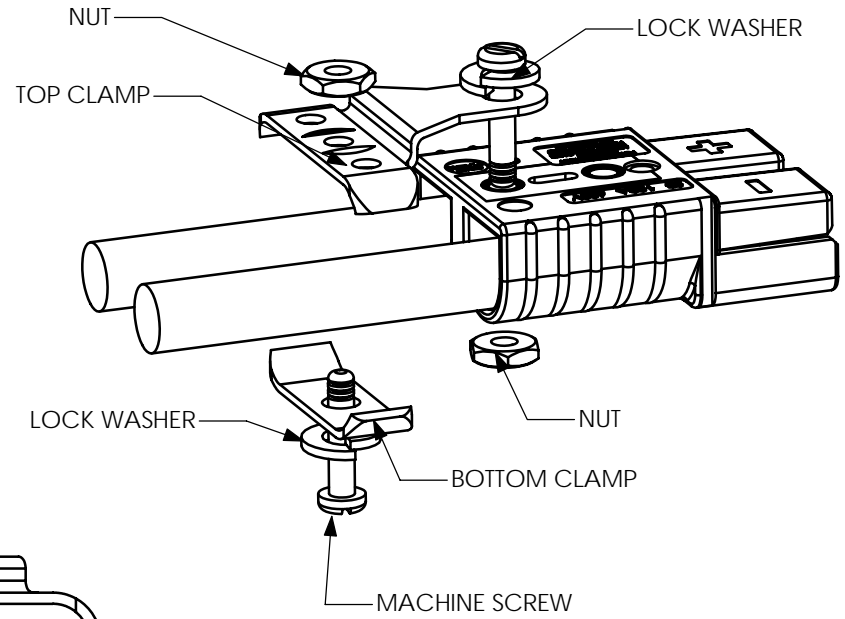
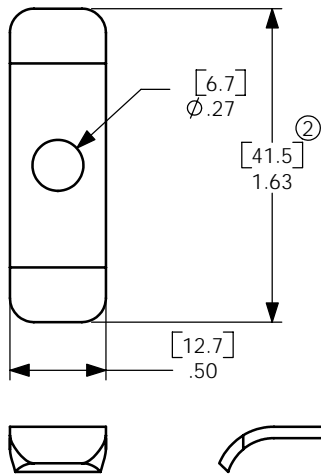
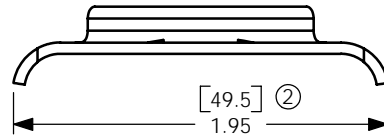
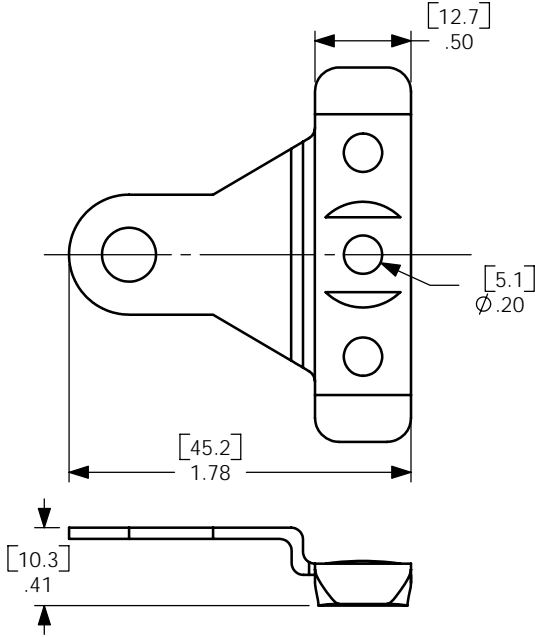


THE INFORMATION CONTAINED IN THIS DRAWING IS THE SOLE PROPERTY OF ANDERSON POWER PRODUCTS. ANY REPRODUCTION IN PART OR WHOLE WITHOUT THE WRITTEN PERMISSION OF ANDERSON POWER PRODUCTS IS PROHIBITED.

DATE	4/26/06
BY:	CMS
DESCRIPTION OF CHANGES	
1	ECRN 13998
2	ECRN 14323: 1.95 WAS 1.86, 1.63 WAS 1.51, TOLERANCE
REV.	



NOTES:

1. MATERIAL- COLD ROLLED STEEL; ZINC PLATE- YELLOW
2. HARDWARE KIT INCLUDES-TWO MACHINE SCREWS, TWO NUTS TWO LOCK WASHERS

ITEM NO.	PART OR IDENTIFYING NO.	NOMENCLATURE OR DESCRIPTION	MATERIAL SPECIFICATION	QTY RECD
COPYRIGHT 2002 ANDERSON POWER PRODUCTS. ALL RIGHTS RESERVED. UNAUTHORIZED REPRODUCTION HEREBY PROHIBITED.				
DIMENSIONS ARE IN INCHES DIMENSIONS IN PARENTHESES [ ] ARE IN MILLIMETERS		CAD GENERATED DRAWING, DO NOT MANUALLY UPDATE		<b>ANDERSON POWER PRODUCTS</b>
TOLERANCES ARE: ② 2PL- ±.05 [±1.3]		APPROVALS	DATE	
MATERIALS: SEE NOTES		DRAWN	CMS	11/15/02
FINISH SEE NOTES		CHECKED	DJD	11/18/02
DO NOT SCALE DRAWING		RESP ENG	MAW	11/18/02
		MFG ENG	DAM	11/18/02
		QUAL ENG	RPO	11/18/02
SPECIFICATION: 114414S1			SIZE A	REV. 2
SCALE NONE			CADFILES/01672	SHEET 1 OF 1