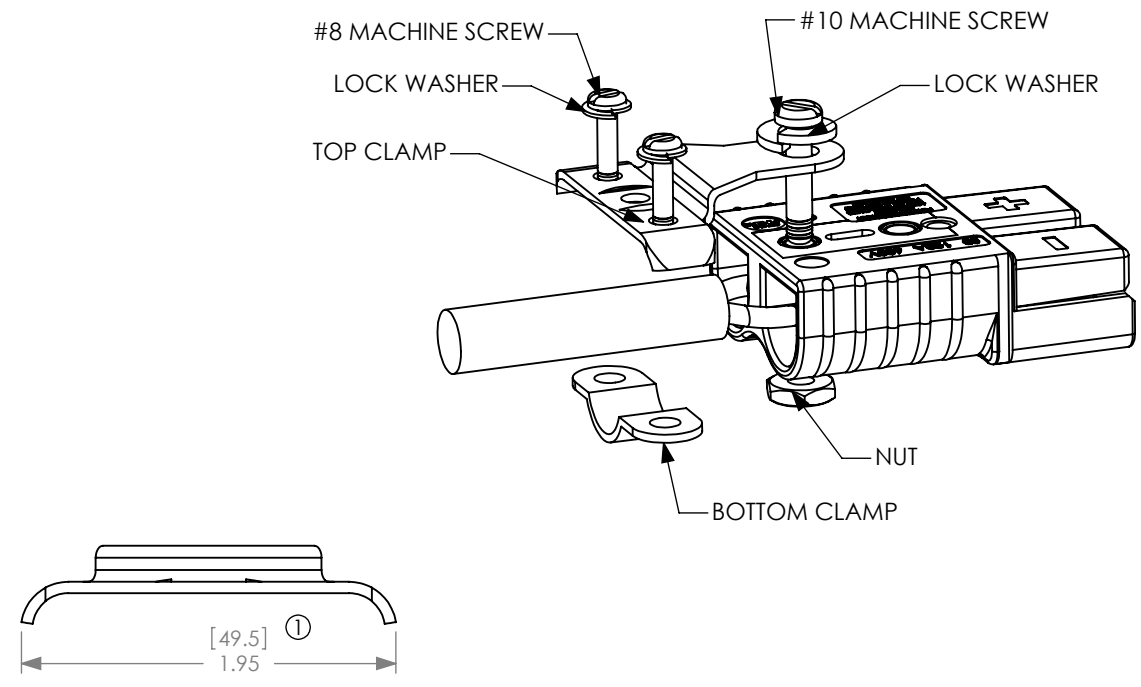
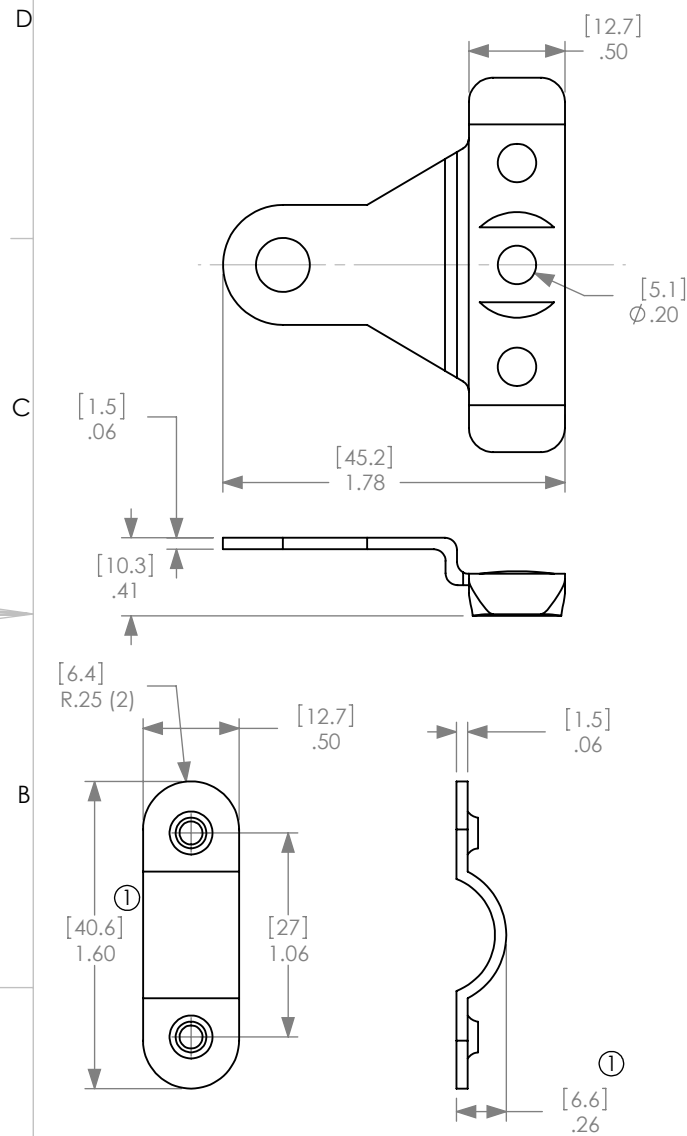


Copyright 2008

ANDERSON POWER PRODUCTS RESERVES THE RIGHT TO ALTER PRODUCT TYPES, THEIR TECHNICAL DATA, DIMENSION, STYLE AND ACCESSORIES WITHOUT PRIOR NOTIFICATION.

THE INFORMATION CONTAINED IN THIS DRAWING IS THE SOLE PROPERTY OF ANDERSON POWER PRODUCTS. ANY REPRODUCTION IN PART OR WHOLE WITHOUT THE WRITTEN PERMISSION OF ANDERSON POWER PRODUCTS IS PROHIBITED.



- NOTES:  
 1. MATERIAL- COLD ROLLED STEEL; ZINC PLATE- YELLOW  
 2. HARDWARE KIT INCLUDES- ALL HARDWARE SHOWN ABOVE

DIMENSIONS ARE IN: INCH[MM]		APPROVALS		ANDERSON POWER PRODUCTS	
UNLESS OTHERWISE STATED		DRAWN	CMS 5/23/08	TITLE	
TOLERANCES:		CHECKED	DJD 5/28/08	CATALOG NUMBER 981G2	
DECIMALS (INCH)	DECIMALS (MM)	MFG APP	CHB 5/23/08	SB120 CABLE CLAMP FOR TWIN CONDUCTOR CABLE	
.XX ± .05	.X ± 1.3	QC APP	UFN 5/23/08	SIZE	DWG NO.
SURFACE FINISH:		ENG APP	AMS 5/23/08	A/A4	114782S1
MACHINED 128 [3.2]				SCALE	CADFILE
MOLDED 64 [1.6]				NONE	02786
MATERIAL: SEE NOTES				SHEET	1 OF 1
FINISH: SEE NOTES					
-CAD GENERATED DRAWING- DO NOT MANUALLY UPDATE DO NOT SCALE					

2	ECRN-14849 CLAMP THICKNESS DIMENSION	TWE	3/8/11
1	ECRN 14323:1.95 WAS 1.86, 1.60 WAS 1.56, .26 WAS .25, TOLERANCES	CMS	9/17/08
REV.	DESCRIPTION OF CHANGES	APPROVED	DATE

