

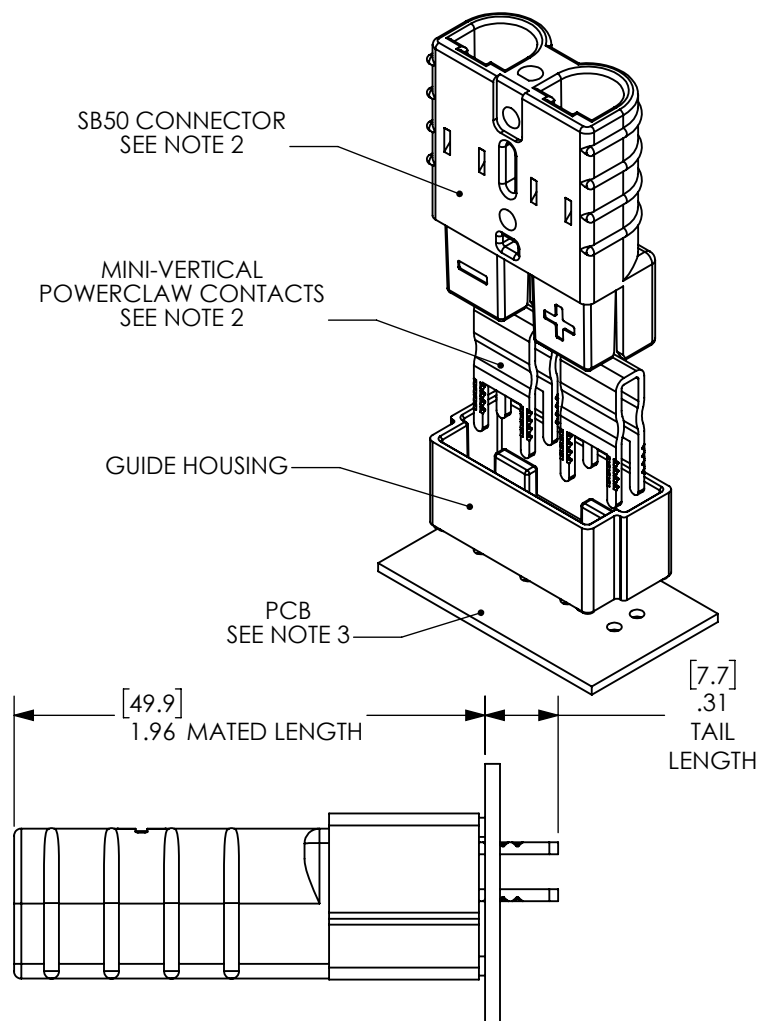
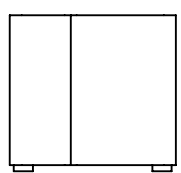
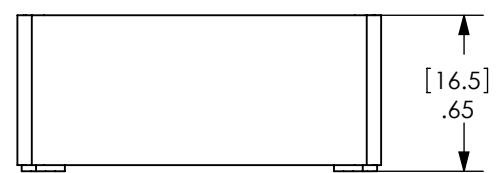
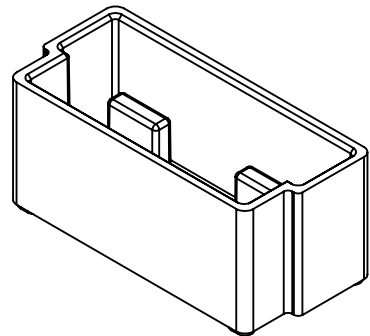
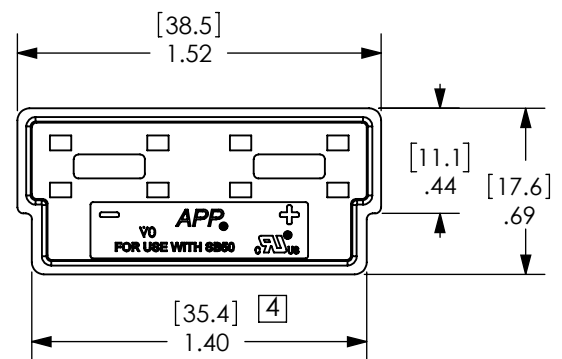
THE INFORMATION CONTAINED IN THIS DRAWING IS THE SOLE PROPERTY OF ANDERSON POWER PRODUCTS. ANY REPRODUCTION IN PART OR WHOLE WITHOUT THE WRITTEN PERMISSION OF ANDERSON POWER PRODUCTS IS PROHIBITED.

Copyright 2011

ANDERSON POWER PRODUCTS RESERVES THE RIGHT TO ALTER PRODUCT TYPES, THEIR TECHNICAL DATA, DIMENSION, STYLE AND ACCESSORIES WITHOUT PRIOR NOTIFICATION.

D
C
B
A

D
C
B
A



NOTES:

1. THIS GUIDE HOUSING FOR USE WITH TWO MINI-VERTICAL POWERCLAW CONTACTS, AND IS TO BE MATED WITH ONE SB50 CONNECTOR ONLY.
2. POWERCLAW CONTACTS AND SB50 CONNECTOR SOLD SEPARATELY
3. FOR PCB HOLE MOUNTING DIMENSIONS SEE DWG. 114332S1

| REV. | DESCRIPTION | APPRV | DATE |
|-----------|--|-------|-----------|
| 4 | ECN 2023-0055 - UPDATED GUIDE HOUSING GEOMETRY | CPD | 6/29/2023 |
| 3 | ECRN-15202 | TWE | 7/13/2012 |
| 2 | ECRN-15002 | NTS | 10/27/11 |
| 1 | ECRN 14249 | CMS | 3/26/08 |
| REVISIONS | | | |

| | | | | | | | | | |
|---------------------------------|---------------|-------------|--|---|------------|---|----------|------------|------|
| DIMENSIONS ARE IN: | | INCH [MM] | | APPROVALS | | ANDERSON POWER PRODUCTS | | | |
| UNLESS OTHERWISE STATED | | TOLERANCES: | | | | | | | |
| DECIMALS (INCH) | DECIMALS (MM) | ANGLES | | DRAWN | | TITLE CATALOG NO. PC-HSG-SB MINI-VERTICAL POWERCLAW GUIDE HOUSING FOR SB50 | | | |
| .XX ±.02 | .X ±.5 | ±2° | | CMS | 11/25/2002 | | | | |
| SURFACE FINISH: | | | | CHECKED | DJD | | | 1/25/2002 | |
| MACHINED 128µin [3.2µ] | | | | MFG APPRV | DAM | | | 11/25/2002 | |
| MOLDED 64µin [1.6µ] | | | | QC APPRV | RPO | | | 11/25/2002 | |
| MATERIAL: PC, UL94V-0, BLACK | | | | ENG APPRV | MAW | 11/25/2002 | SIZE | DWG NO. | REV. |
| FINISH: AS MOLDED | | | | -CAD GENERATED DRAWING- DO NOT MANUALLY UPDATE DO NOT SCALE | | A | 114332S4 | 4 | |
| 3rd ANGLE PROJECTION | | | | SCALE | CADFILE | SHEET | | | |
| | | | | NONE | 01686 | 1 OF 1 | | | |