

8

7

6

5

4

3

2

1

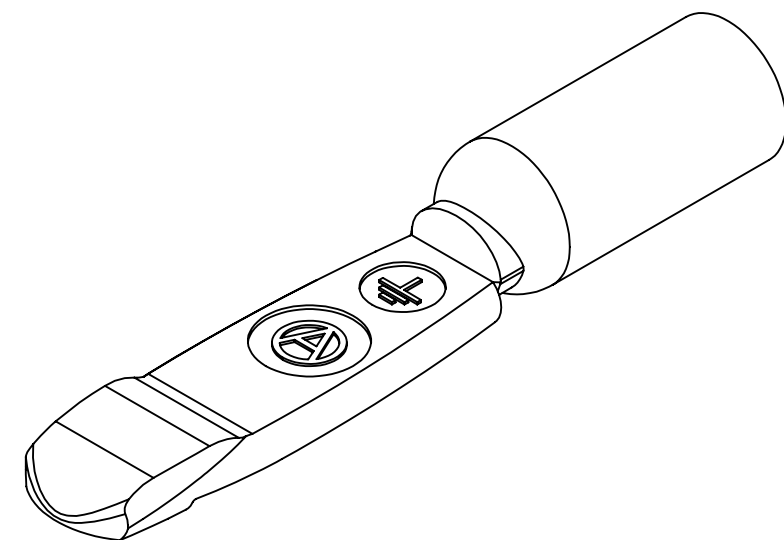
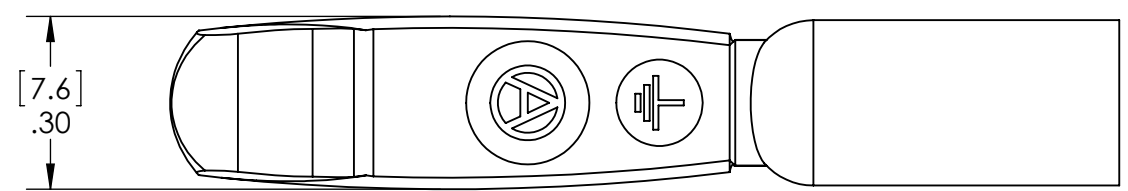
THE INFORMATION CONTAINED IN THIS DRAWING IS THE SOLE PROPERTY OF ANDERSON POWER PRODUCTS. ANY REPRODUCTION IN PART OR WHOLE WITHOUT THE WRITTEN PERMISSION OF ANDERSON POWER PRODUCTS IS PROHIBITED.

Copyright 2012

ANDERSON POWER PRODUCTS RESERVES THE RIGHT TO ALTER PRODUCT TYPES, THEIR TECHNICAL DATA, DIMENSION, STYLE AND ACCESSORIES WITHOUT PRIOR NOTIFICATION.

E

E

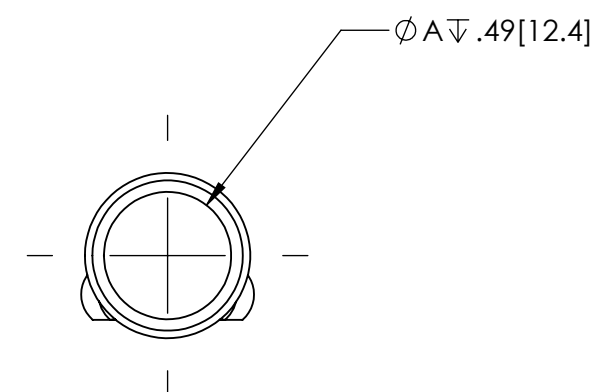
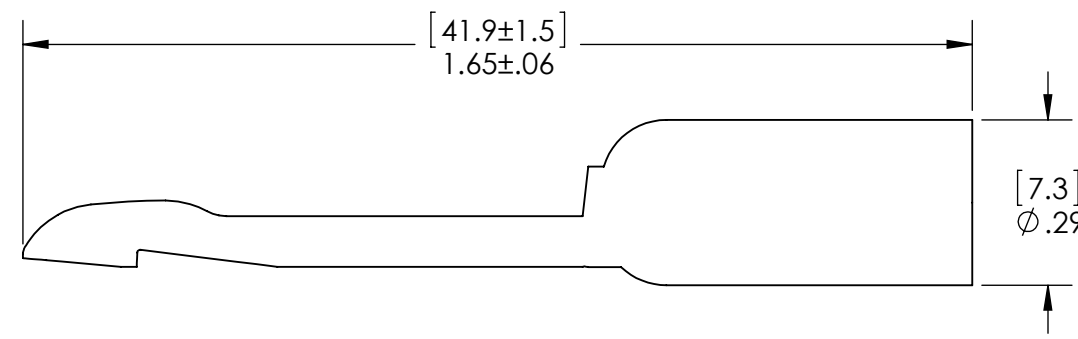
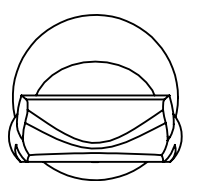


D

D

C

C



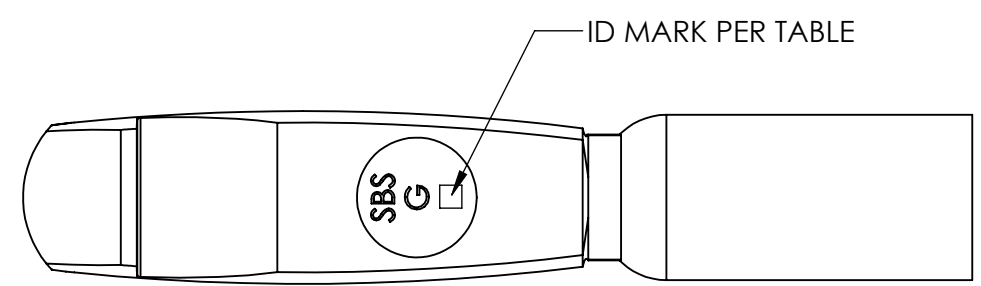
B

B

CAT. NO.	WIRE GAGE	øA	ID MARK
1340G1	6 AWG	ø.22 [5.6]	6
1340G2	8 AWG	ø.19 [4.7]	8
1340G3	10/12 AWG	ø.14 [3.5]	10/12

A

A



DIMENSIONS ARE IN:	INCH [MM]	APPROVALS	
UNLESS OTHERWISE STATED		DRAWN	
TOLERANCES:		NTS	6/9/2011
DECIMALS (INCH)	DECIMALS (MM)	CHECKED	
.XX ±.02	.X ±.5	LLD	6/16/2011
ANGLES	±2°	MFG APPRV	
SURFACE FINISH:		CHB	6/17/2011
MACHINED	64 [1.6]	QC APPRV	
MOLDED	32 [0.8]	UFN	6/16/2011
MATERIAL:	COPPER ALLOY	ENG APPRV	
FINISH:	SILVER PLATE	BD	6/16/2011

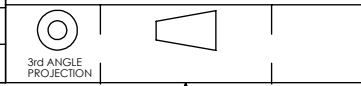
ANDERSON POWER PRODUCTS

TITLE
OUTLINE: 1340G SERIES
PREMATE CONTACTS
FOR SBS75G

SIZE B DWG NO. B02111S1 REV. 1

SCALE NONE CADFILE 03369 SHEET 1 OF 1

REV.	DESCRIPTION	APPRV	DATE
1	ECRN-15034	NTS	1/4/12
REVISIONS			



-CAD GENERATED DRAWING-
DO NOT MANUALLY UPDATE
DO NOT SCALE

8

7

6

5

4

3

2

1