

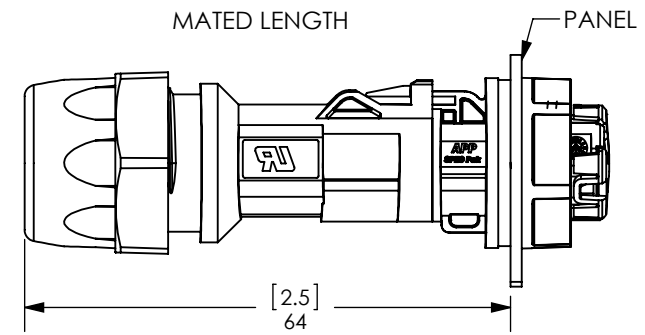
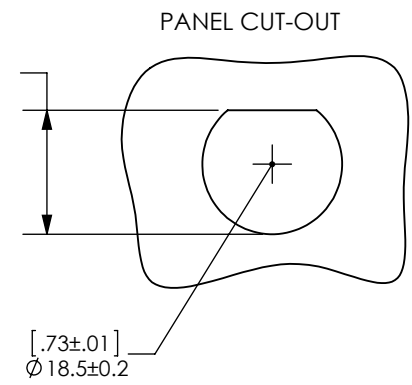
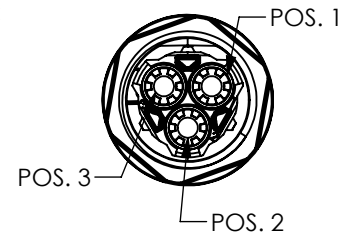
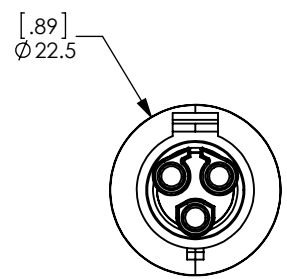
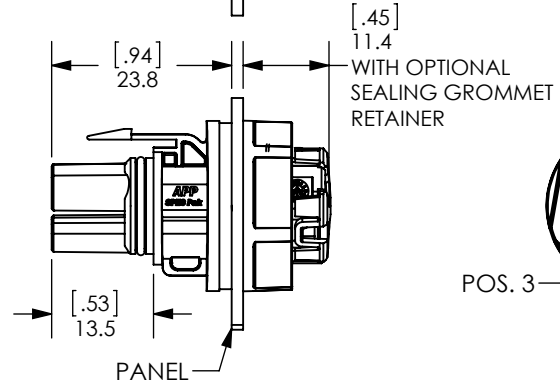
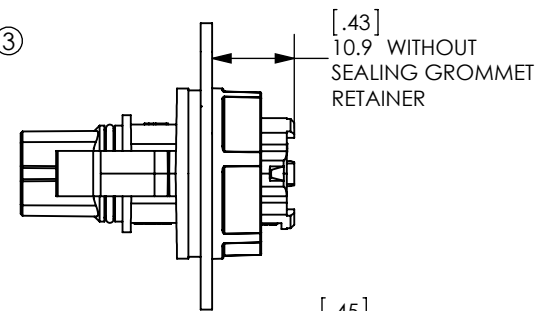
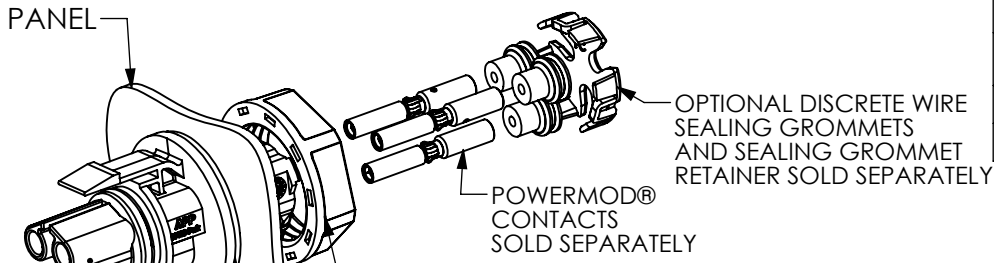
THE INFORMATION CONTAINED IN THIS DRAWING IS THE SOLE PROPERTY OF ANDERSON POWER PRODUCTS. ANY REPRODUCTION IN PART OR WHOLE WITHOUT THE WRITTEN PERMISSION OF ANDERSON POWER PRODUCTS IS PROHIBITED.

**Copyright 2013**

ANDERSON POWER PRODUCTS RESERVES THE RIGHT TO ALTER PRODUCT TYPES, THEIR TECHNICAL DATA, DIMENSION, STYLE AND ACCESSORIES WITHOUT PRIOR NOTIFICATION.

**COMPONENTS INCLUDED**

ITEM	QTY	DESCRIPTION	MATERIAL
1	1	JAM NUT SHELL (FEMALE) WITH O-RING	SHELL- PC, O-RING: NBR- BLACK
2	1	PANEL GASKET	NBR, BLACK
3	1	JAM NUT	PC, BLACK



- NOTES:**
- FOR USE WITH POWERMOD® SOCKET CONTACTS (SOLD SEPARATELY)
  - REFER TO ASSEMBLY INSTRUCTIONS 1S6606

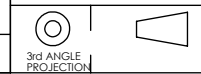
DIMENSIONS ARE IN:	MM [INCH]	<b>APPROVALS</b>	
UNLESS OTHERWISE STATED		DRAWN	CMS 11/13/2013
TOLERANCES:		CHECKED	NTS 11/21/2013
DECIMALS (INCH)	DECIMALS (MM)	ANGLES	
.XX ± .02	.X ± .5	±2°	
SURFACE FINISH:		MFG APPRV	CHB 11/22/2013
MACHINED	3.2µ [128µin]	QC APPRV	UFN 11/22/2013
MOLDED	1.6µ [64µin]	ENG APPRV	BD 11/22/2013
MATERIAL: SEE TABLE		SIZE	A
FINISH:		DWG NO.	115318S1
		REV.	0

**ANDERSON POWER PRODUCTS**

TITLE

SPEC PAK® MINI 3PL JAM NUT FEMALE KIT  
CAT. NO. SK7-019M03

REV.	DESCRIPTION	APPRV	DATE
REVISIONS			



-CAD GENERATED DRAWING-  
DO NOT MANUALLY UPDATE  
DO NOT SCALE

SCALE	NONE	CADFILE	04093	SHEET	1 OF 1
-------	------	---------	-------	-------	--------