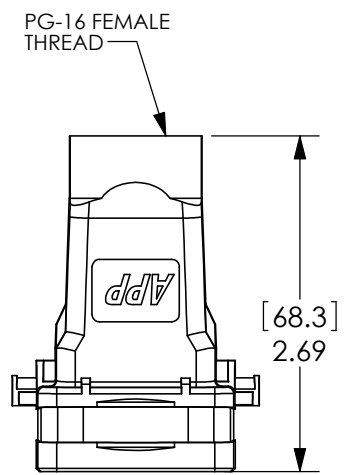


THE INFORMATION CONTAINED IN THIS DRAWING IS THE SOLE PROPERTY OF ANDERSON POWER PRODUCTS. ANY REPRODUCTION IN PART OR WHOLE WITHOUT THE WRITTEN PERMISSION OF ANDERSON POWER PRODUCTS IS PROHIBITED.

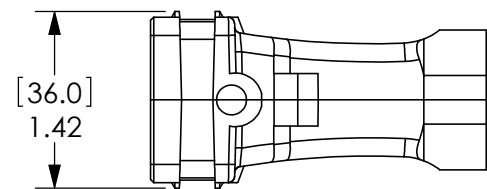
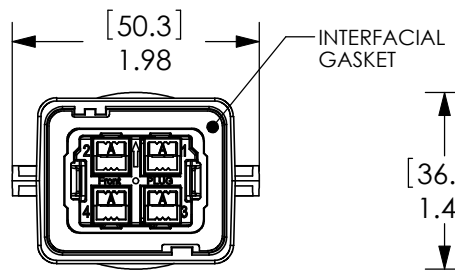
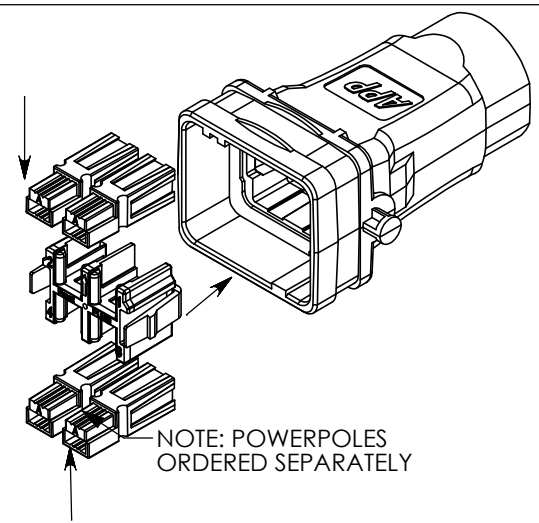
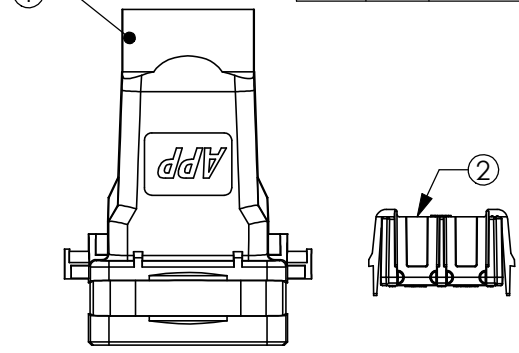
Copyright 2010

ANDERSON POWER PRODUCTS RESERVES THE RIGHT TO ALTER PRODUCT TYPES, THEIR TECHNICAL DATA, DIMENSION, STYLE AND ACCESSORIES WITHOUT PRIOR NOTIFICATION.



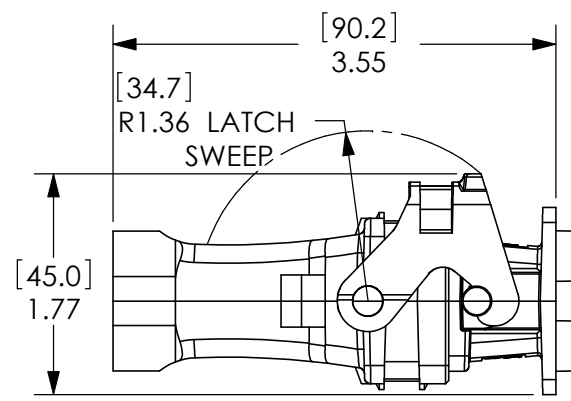
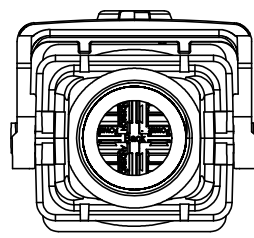
PLUG KIT

ITEM	QTY	DESCRIPTION
1	1	PLUG HSG W/GASKET
2	1	2x2 POWERPOLE HOLDER



[36.0]
1.42

PLUG MATED WITH RECEPTACLE, WITH LATCH MOUNTED ON PLUG



- NOTES:
- MATERIAL:
A. PLUG HOUSING- GLASS FILLED PBT, BLACK
B. HOLDER - POLYCARBONATE, BLACK
C. PLUG GASKET- NBR, BLACK
 - REFER TO ASSEMBLY INSTRUCTIONS
 - FOR USE WITH PP15/45 POWERPOLE CONTACTS AND HOUSINGS ONLY
 - PG SEALING GLANDS SOLD SEPARATELY

DIMENSIONS ARE IN:	INCH [MM]	APPROVALS	
UNLESS OTHERWISE STATED		DRAWN	
TOLERANCES:		CMS	4/6/2009
DECIMALS (INCH)	DECIMALS (MM)	CHECKED	
.XX ± .015	.X ± .38	DJD	4/7/2009
.XXX ± .005	.XX ± .13	MFG APPRV	
SURFACE FINISH:		CHB	4/8/2009
MACHINED	128 [3.2] ✓	QC APPRV	
MOLDED	64 [1.6] ✓	UFN	4/7/2009
MATERIAL:		ENG APPRV	
SEE NOTES		DAM	4/7/2009
FINISH:		SIZE	DWG NO.
N/A		A	114853S1

ANDERSON POWER PRODUCTS

TITLE
SPEC PAK: SK6-050B04 4-POSITION, PP15/45 PLUG KIT

REV.
1

SCALE
0.65:1

CADFILE
02891

SHEET
1 OF 1

1	ECRN 14753: MINOR REFERENCE ERRORS FIXED	JHN	12/7/2010
REV.	DESCRIPTION	APPRV	DATE
REVISIONS			

