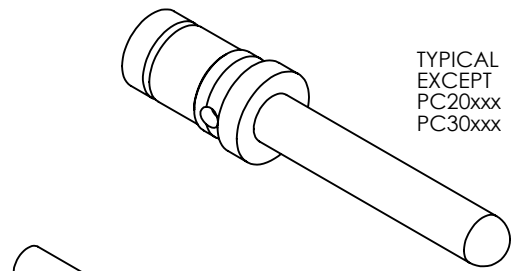


THE INFORMATION CONTAINED IN THIS DRAWING IS THE SOLE PROPERTY OF ANDERSON POWER PRODUCTS. ANY REPRODUCTION IN PART OR WHOLE WITHOUT THE WRITTEN PERMISSION OF ANDERSON POWER PRODUCTS IS PROHIBITED.

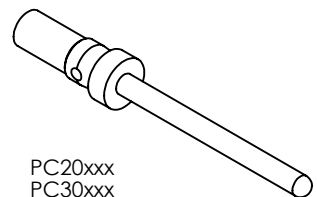
Copyright 2011

ANDERSON POWER PRODUCTS RESERVES THE RIGHT TO ALTER PRODUCT TYPES, THEIR TECHNICAL DATA, DIMENSION, STYLE AND ACCESSORIES WITHOUT PRIOR NOTIFICATION.

D

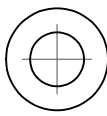
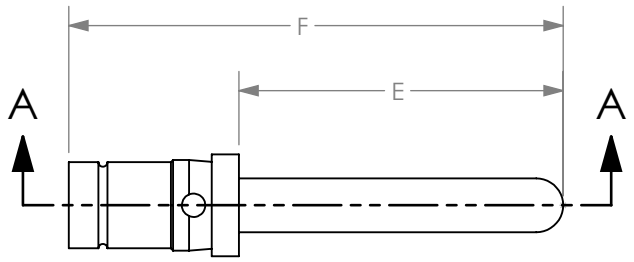


TYPICAL EXCEPT PC20xxx PC30xxx



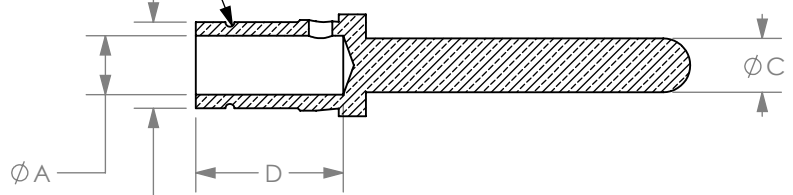
PC20xxx
PC30xxx

C



B

SEE NOTE 6



SECTION A-A

| PART NO. | A | B | C | D | E | F | DESCRIPTION |
|----------|----------|----------|----------|-----------|-----------|------------|------------------------------------|
| | IN[MM] | IN[MM] | IN[MM] | IN[MM] | IN[MM] | IN[MM] | |
| *PC08SSN | .18[4.5] | .26[6.5] | .14[3.6] | .45[11.4] | .56[14.3] | 1.11[28.2] | #8 AWG - STD. LENGTH |
| PC08FSN | .18[4.5] | .26[6.5] | .14[3.6] | .45[11.4] | .61[15.5] | 1.16[29.4] | #8AWG PRE-MATE LENGTH |
| *PC12SSN | .10[2.6] | .15[3.8] | .09[2.4] | .26[6.5] | .56[14.3] | .86[21.8] | #12 AWG- STD. LENGTH |
| PC12FSN | .10[2.6] | .15[3.8] | .09[2.4] | .26[6.5] | .59[15.0] | .89[22.5] | #12 AWG- PRE-MATE LENGTH |
| PC12LSN | .10[2.6] | .15[3.8] | .09[2.4] | .26[6.5] | .52[13.2] | .81[20.7] | #12 AWG POST-MATE |
| *PC12SGH | .10[2.6] | .15[3.8] | .09[2.4] | .26[6.5] | .56[14.3] | .86[21.8] | #12 AWG- STD. LENGTH, HOT PLUG |
| PC12FGH | .10[2.6] | .15[3.8] | .09[2.4] | .26[6.5] | .59[15.0] | .89[22.5] | #12 AWG- PRE-MATE LENGTH, HOT PLUG |
| PC12LGH | .10[2.6] | .15[3.8] | .09[2.4] | .26[6.5] | .52[13.2] | .81[20.7] | #12 AWG POST-MATE, HOT PLUG |
| *PC16SSN | .07[1.7] | .10[2.6] | .06[1.6] | .27[6.8] | .45[11.5] | .75[19.0] | #16 AWG- STD. LENGTH |
| PC16FSN | .07[1.7] | .10[2.6] | .06[1.6] | .27[6.8] | .60[15.3] | .90[22.8] | #16 AWG- PRE-MATE LENGTH |
| PC16LSN | .07[1.7] | .10[2.6] | .06[1.6] | .27[6.8] | .41[10.5] | .71[18.0] | #16 AWG- POST MATE LENGTH |
| PC20SGN | .05[1.2] | .08[2.0] | .04[1.0] | .20[5.2] | .45[11.5] | .69[17.5] | #20 AWG- STD. LENGTH |
| PC20FGN | .05[1.2] | .08[2.0] | .04[1.0] | .20[5.2] | .60[15.3] | .84[21.3] | #20 AWG- PRE-MATE LENGTH |
| PC20LGN | .05[1.2] | .08[2.0] | .04[1.0] | .20[5.2] | .40[10.2] | .64[16.2] | #20 AWG POST-MATE |
| PC30SGN | .03[0.7] | .08[2.0] | .04[1.0] | .20[5.2] | .45[11.5] | .69[17.5] | #30 AWG STD. LENGTH |
| PC30FGN | .03[0.7] | .08[2.0] | .04[1.0] | .20[5.2] | .60[15.3] | .84[21.3] | #30 AWG PRE-MATE LENGTH |
| PC30LGN | .03[0.7] | .08[2.0] | .04[1.0] | .20[5.2] | .40[10.2] | .64[16.2] | #30 AWG POST-MATE |

D

C

B

NOTES:

1. PC08 CONTACTS FOR USE IN 75 AMP POWER DRAWER ONLY
2. PC16 CONTACTS FOR USE IN 35 AMP POWER DRAWER ONLY
3. CRIMP CONTACTS ONTO WIRE PRIOR TO INSERTION INTO HOUSING
4. MATERIALS:
PIN BODY: PC08xxx, PC12xxx, PC16xxx - COPPER
PC30xxx, PC20xxx - BRASS
5. PLATING: PLATING IS SPECIFIED BY THE LAST TWO DIGITS OF THE PART NUMBER.
"SN" DENOTES SILVER OVER NICKEL
"GN" DENOTES GOLD OVER NICKEL
"GH" DENOTES GOLD OVER NICKEL AND HOT PLUGGABLE
6. CONTACTS WITH AN "*" HAVE AN EXTERNAL GROOVE ON THE CRIMP BARREL

A

| REV. | DESCRIPTION | APPRV | DATE |
|------|-------------|-------|----------|
| 10 | ECRN-14975 | TWE | 9/21/11 |
| 9 | ECRN-14955 | TWE | 8/3/11 |
| 8 | ECRN-14780 | TWE | 11/29/10 |
| 7 | ECRN-14779 | TWE | 11/24/10 |
| 6 | ECRN-14199 | CMS | 5/5/07 |

REVISIONS

| | | | | |
|--------------------------------------|-----------|------------------|-----------|---|
| DIMENSIONS ARE IN: | INCH [MM] | APPROVALS | | <p>ANDERSON POWER PRODUCTS</p> <p>TITLE</p> <p>PIN CRIMP CONTACTS FOR POWER DRAWER SERIES CONNECTORS</p> |
| UNLESS OTHERWISE STATED | | DRAWN | 6/13/2003 | |
| TOLERANCES: | | CHECKED | 6/13/2003 | |
| DECIMALS (INCH) DECIMALS (MM) ANGLES | | MFG APPRV | 7/8/2003 | |
| 2PL±.02[±.5] | | DAM | 7/8/2003 | |
| MATERIAL: SEE NOTES | | QC APPRV | 7/8/2003 | |
| FINISH: SEE NOTES | | RPO | 7/8/2003 | |
| | | ENG APPRV | 7/8/2003 | |
| | | MAW | 7/8/2003 | |
| | | SIZE | A | |
| | | DWG NO. | 114446S1 | |
| | | REV. | 10 | |
| | | SCALE | 3:1 | |
| | | CADFILE | 01772 | |
| | | SHEET | 1 OF 1 | |