

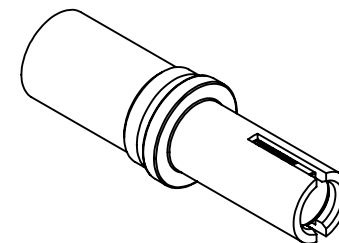
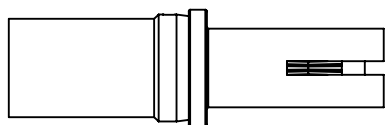
THE INFORMATION CONTAINED IN THIS DRAWING IS THE SOLE PROPERTY OF ANDERSON POWER PRODUCTS. ANY REPRODUCTION IN PART OR WHOLE WITHOUT THE WRITTEN PERMISSION OF ANDERSON POWER PRODUCTS IS PROHIBITED.

Copyright 2015

ANDERSON POWER PRODUCTS RESERVES THE RIGHT TO ALTER PRODUCT TYPES, THEIR TECHNICAL DATA, DIMENSION, STYLE AND ACCESSORIES WITHOUT PRIOR NOTIFICATION.

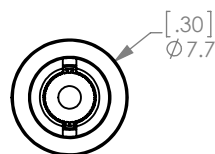
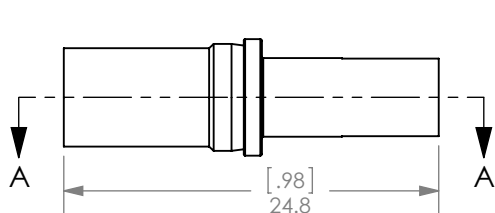
D

D



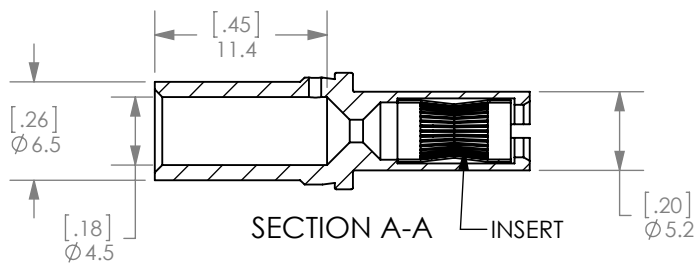
C

C



B

B



A

A

NOTES:

1. FOR USE IN 5 POSITION MID POWER SPEC PAK® ONLY
2. CRIMP CONTACTS ONTO WIRE PRIOR TO INSERTION INTO HOUSING
3. MATERIALS:
 SOCKET BODY- COPPER
 SOCKET INSERT- BECU
4. PLATING:
 SOCKET BODY- SILVER OVER NICKEL
 SOCKET INSERT- GOLD OVER NICKEL

DIMENSIONS ARE IN:		MM [INCH]		APPROVALS		ANDERSON POWER PRODUCTS	
UNLESS OTHERWISE STATED				DRAWN	CMS	4/27/2015	TITLE CAT. NO. SC08-GH #8 HOT PLUG/ GROUNDING CRIMP CONTACT
TOLERANCES:				CHECKED	JYL	4/28/2015	
DECIMALS (INCH)	DECIMALS (MM)	ANGLES		MFG APPRV	LLD	4/28/2015	
.XX ± .02	.X ± .5	±2°		QC APPRV	UFN	4/28/2015	
SURFACE FINISH:				MATERIAL:	ENG APPRV	CLY	4/29/2015
MACHINED 3.2µ [128µin] ✓				SEE NOTES			SIZE A
MOLDED 1.6µ [64µin] ✓				SEE NOTES			DWG NO. 115436S1
FINISH: SEE NOTES							REV. 0
3rd ANGLE PROJECTION							SCALE NONE
							CADFILE 04503
							SHEET 1 OF 1

REV.	DESCRIPTION	APPRV	DATE
REVISIONS			