

THE INFORMATION CONTAINED IN THIS DRAWING IS THE SOLE PROPERTY OF ANDERSON POWER PRODUCTS. ANY REPRODUCTION IN PART OR WHOLE WITHOUT THE WRITTEN PERMISSION OF ANDERSON POWER PRODUCTS IS PROHIBITED.

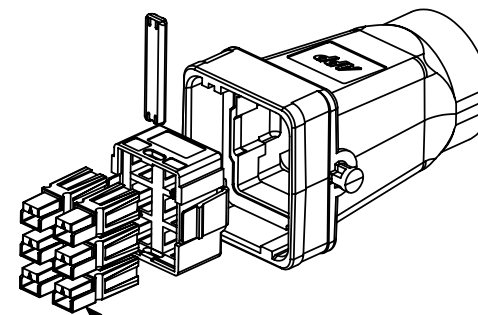
Copyright 2008

ANDERSON POWER PRODUCTS RESERVES THE RIGHT TO ALTER PRODUCT TYPES, THEIR TECHNICAL DATA, DIMENSION, STYLE AND ACCESSORIES WITHOUT PRIOR NOTIFICATION.

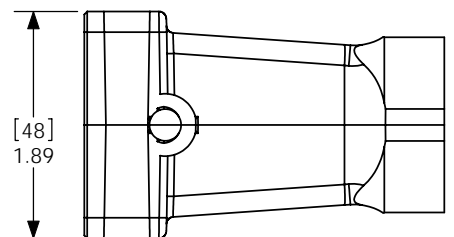
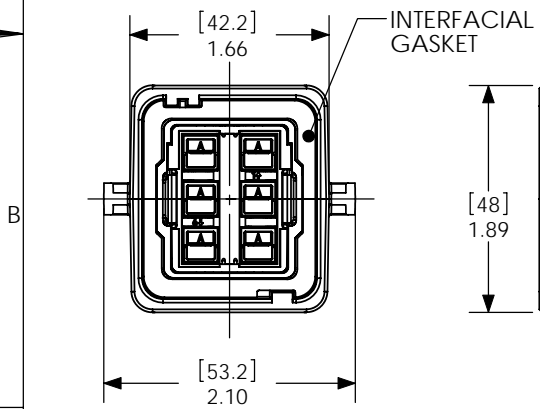
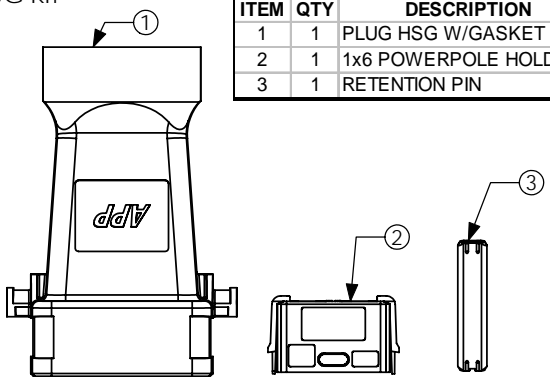
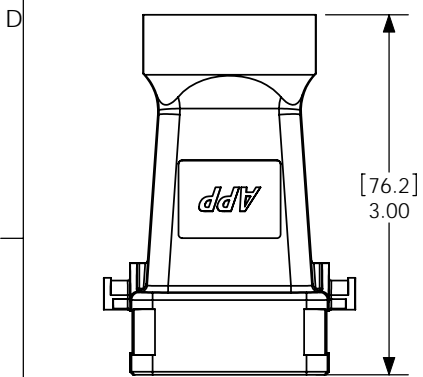
PLUG KIT

ITEM	QTY	DESCRIPTION
1	1	PLUG HSG W/GASKET
2	1	1x6 POWERPOLE HOLDER
3	1	RETENTION PIN

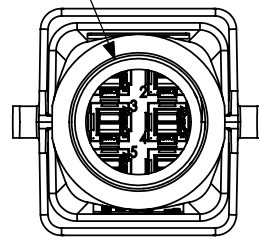
TYPICAL ASSEMBLY



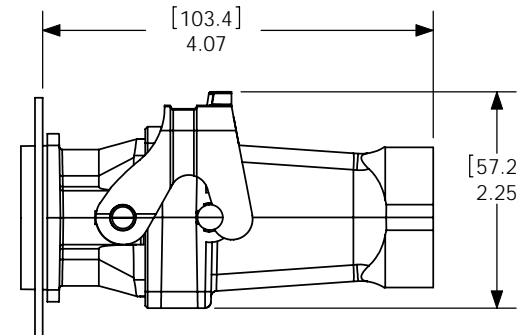
NOTE: POWERPOLES ORDERED SEPARATELY



PG-21 FEMALE THREAD



MATED LENGTH WITH PANEL RECEPTACLE



NOTES:

- MATERIAL:
A. PLUG HOUSING- GLASS FILLED PBT, BLACK
B. HOLDER AND RETENTION PIN- GLASS FILLED NYLON, BLACK
C. PLUG GASKET- NBR, BLACK
- REFER TO ASSEMBLY INSTRUCTIONS
- FOR USE WITH PP15/45 POWERPOLE CONTACTS AND HOUSINGS ONLY
- PG SEALING GLANDS SOLD SEPARATELY

DIMENSIONS ARE IN:	INCH[MM]	APPROVALS	
UNLESS OTHERWISE STATED		DRAWN	CMS 9/17/08
TOLERANCES:		CHECKED	DJD 1/30/09
DECIMALS (INCH)	DECIMALS (MM)	ANGLES	MFG APP
.XX ± .02	X ± .5	±2°	CHB 1/30/09
SURFACE FINISH:		QC APP	UFN 1/30/09
MACHINED	128 [3.2]	ENG APP	DAM 1/30/09
MOLDED	64 [1.6]	SEE NOTES	
MATERIAL:		FINISH:	
N/A		N/A	

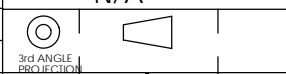
ANDERSON POWER PRODUCTS

TITLE: SPEC PAK: SK6-053B06 KIT PLUG- 6 POSITION FOR PP15/45

SIZE: A/A4 DWG NO. 114777S1 REV. 0

SCALE: NONE CADFILE 02778 SHEET 1 OF 1

REV.	DESCRIPTION OF CHANGES	APPROVED	DATE



-CAD GENERATED DRAWING- DO NOT MANUALLY UPDATE DO NOT SCALE