

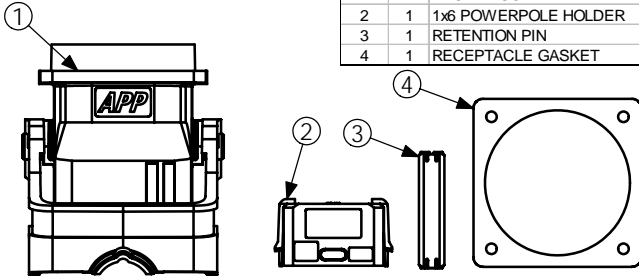
THE INFORMATION CONTAINED IN THIS DRAWING IS THE SOLE PROPERTY OF ANDERSON POWER PRODUCTS. ANY REPRODUCTION IN PART OR WHOLE WITHOUT THE WRITTEN PERMISSION OF ANDERSON POWER PRODUCTS IS PROHIBITED.

Copyright 2008

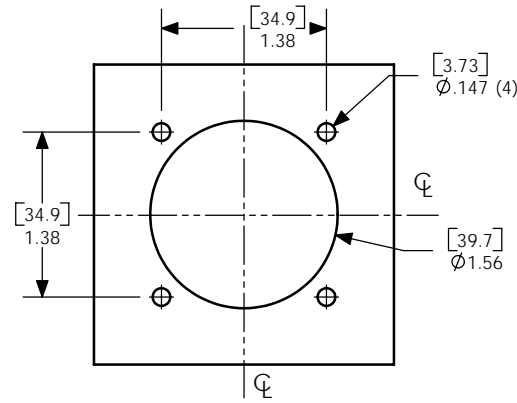
ANDERSON POWER PRODUCTS RESERVES THE RIGHT TO ALTER PRODUCT TYPES, THEIR TECHNICAL DATA, DIMENSION, STYLE AND ACCESSORIES WITHOUT PRIOR NOTIFICATION.

RECEPTACLE KIT

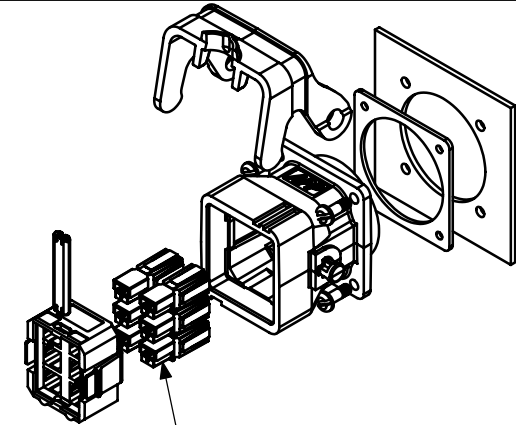
ITEM	QTY	DESCRIPTION
1	1	RECEP HSG
2	1	1x6 POWERPOLE HOLDER
3	1	RETENTION PIN
4	1	RECEPTACLE GASKET



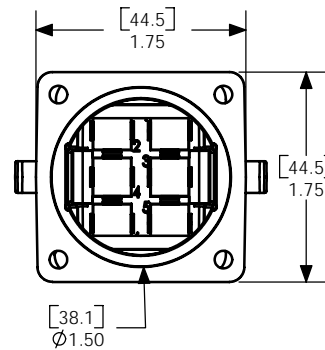
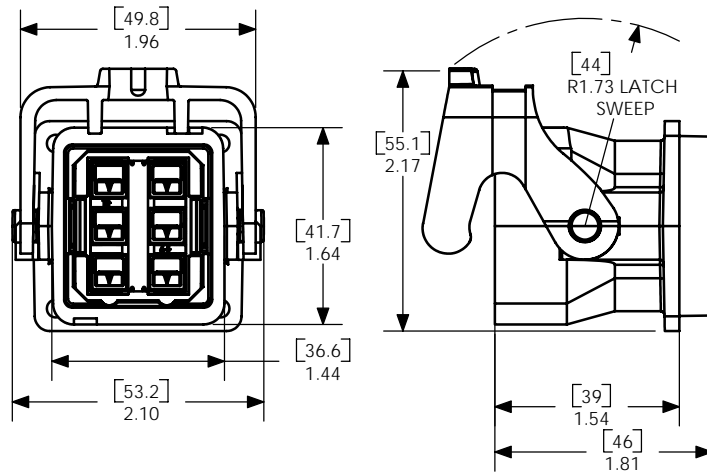
RECOMMENDED PANLE CUT-OUT



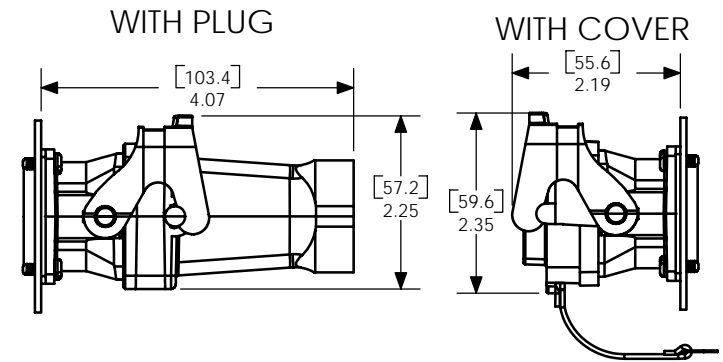
DIMENSIONS SYMMETRIC ACROSS C



NOTE: POWERPOLES ORDERED SEPARATELY



MATED LENGTH



NOTES:

- MATERIAL:
A. RECEPTACLE HOUSING- GLASS FILLED PBT, BLACK
B. HOLDER AND RETENTION PIN- GLASS FILLED NYLON, BLACK
C. PANEL GASKET- NBR, BLACK
REFER TO ASSEMBLY INSTRUCTIONS
- FOR USE WITH PP15/45 POWERPOLE CONTACTS AND HOUSINGS ONLY

DIMENSIONS ARE IN:		APPROVALS		ANDERSON POWER PRODUCTS	
INCH	[MM]	DRAWN		TITLE	
UNLESS OTHERWISE STATED		CMS	9/17/08	SPEC PAK: SK2-053B06 KIT	
TOLERANCES:		CHECKED	DJD	RECEPTACLE 6-POSITION	
DECIMALS (INCH)	DECIMALS (MM)	MFG APP	CHB	FOR PP15/45 HOUSINGS	
XX ± .02	X ± .5	QC APP	UFN	SIZE	DWG NO.
SURFACE FINISH:		ENG APP	DAM	A/A4	114778S1
MACHINED 128 [3.2]				SCALE	CADFILE
MOLDED 64 [1.6]				NONE	02779
MATERIAL: SEE NOTES				SHEET	1 OF 1
FINISH:				REV.	0
				-CAD GENERATED DRAWING- DO NOT MANUALLY UPDATE DO NOT SCALE	

REV.	DESCRIPTION OF CHANGES	APPROVED	DATE

