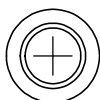
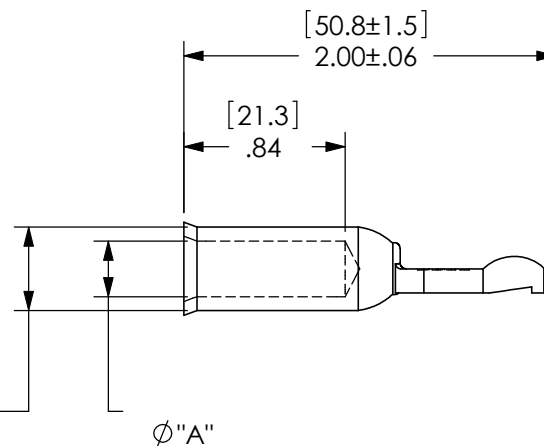
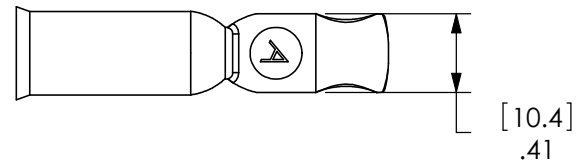
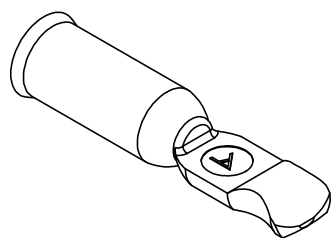


THE INFORMATION CONTAINED IN THIS DRAWING IS THE SOLE PROPERTY OF ANDERSON POWER PRODUCTS. ANY REPRODUCTION IN PART OR WHOLE WITHOUT THE WRITTEN PERMISSION OF ANDERSON POWER PRODUCTS IS PROHIBITED.

Copyright 2008

ANDERSON POWER PRODUCTS RESERVES THE RIGHT TO ALTER PRODUCT TYPES, THEIR TECHNICAL DATA, DIMENSION, STYLE AND ACCESSORIES WITHOUT PRIOR NOTIFICATION.



CAT. NO.	WIRE SIZE	"A"	
		INCH	MM
1319	#2 AWG	0.34	8.6
1319G4	#4 AWG	0.29	7.4
1319G6	#6 AWG	0.22	5.6

DIMENSIONS ARE IN:	INCH[MM]	APPROVALS		 ANDERSON POWER PRODUCTS <b>TITLE</b> PP120 CONTACT
UNLESS OTHERWISE STATED		DRAWN	CMS 6/21/99	
TOLERANCES:		CHECKED	DJD 6/21/99	
DECIMALS (INCH)	DECIMALS (MM)	ANGLES		
.XX ±.02	.X ±.5	±2°		MFG APP
SURFACE FINISH:		CHB	6/21/99	QC APP
MACHINED	128 [3.2] ✓	DJM	6/22/99	ENG APP
MOLDED	64 [1.6] ✓	UFN	6/22/99	
MATERIAL: COPPER ALLOY		SIZE	DWG NO.	REV.
FINISH: SILVER PLATE		A/A4	114156S1	1
 3rd ANGLE PROJECTION		CAD GENERATED DRAWING- DO NOT MANUALLY UPDATE DO NOT SCALE	SCALE	CADFILE
		NONE	01054	SHEET 1 OF 1

1	ECRN 14358 - REVISE, REDRAW, CONSOLIDATE	AMS	12/16/08
REV.	DESCRIPTION OF CHANGES	APPROVED	DATE