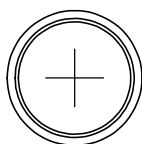
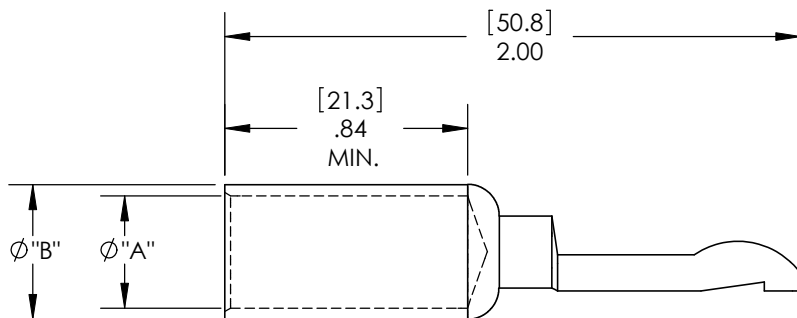
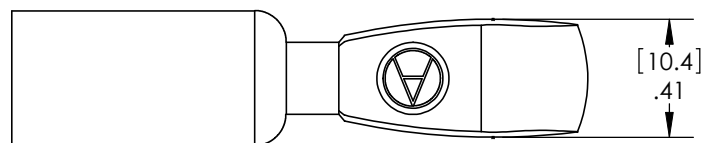
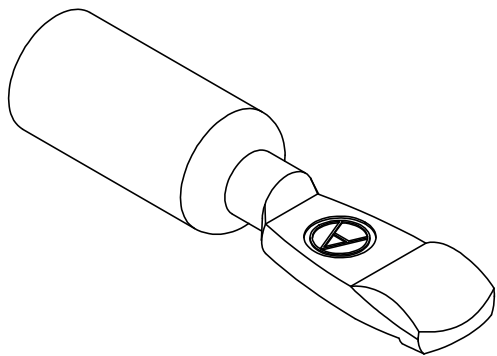


THE INFORMATION CONTAINED IN THIS DRAWING IS THE SOLE PROPERTY OF ANDERSON POWER PRODUCTS. ANY REPRODUCTION IN PART OR WHOLE WITHOUT THE WRITTEN PERMISSION OF ANDERSON POWER PRODUCTS IS PROHIBITED.

Copyright 2009

ANDERSON POWER PRODUCTS RESERVES THE RIGHT TO ALTER PRODUCT TYPES, THEIR TECHNICAL DATA, DIMENSION, STYLE AND ACCESSORIES WITHOUT PRIOR NOTIFICATION.

CAT. NO.	WIRE SIZE	"A"		"B"		FOR USE WITH
		IN	MM	IN	MM	
1323G1	#1 AWG	0.39	9.9	0.47	11.9	PP120 & SB120 HSGS
1323G2	#1/0 AWG	0.44	11.2	0.52	13.2	PP120 HSGS ONLY



DIMENSIONS ARE IN:	INCH[MM]	APPROVALS		ANDERSON POWER PRODUCTS
UNLESS OTHERWISE STATED		DRAWN	AMS 04/10/09	
TOLERANCES:		CHECKED	DJD 04/13/09	
DECIMALS (INCH)	DECIMALS (MM)	ANGLES	MFG APP	
.XX ±.02	.X ±.5	±2°	CHB 04/13/09	
SURFACE FINISH:		QC APP	UFN 04/13/09	SIZE A/A4 DWG NO. 114856S1 REV. 0
MACHINED 128 [3.2] ✓		ENG APP	DAM 04/10/09	
MOLDED 64 [1.6] ✓				
MATERIAL: COPPER ALLOY				SCALE NONE CADFILE 02894 SHEET 1 OF 1
FINISH: SILVER PLATE				

REV.	DESCRIPTION OF CHANGES	APPROVED	DATE
*	*****	***	*****



CAD GENERATED DRAWING
DO NOT MANUALLY UPDATE
DO NOT SCALE