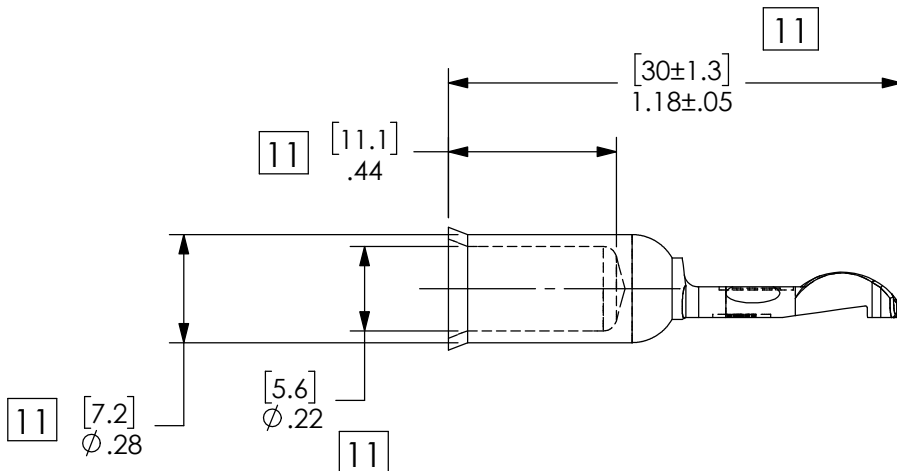
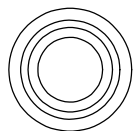
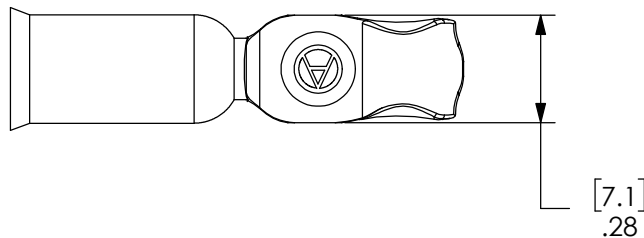
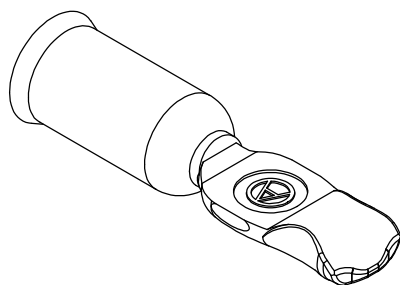


THE INFORMATION CONTAINED IN THIS DRAWING IS THE SOLE PROPERTY OF ANDERSON POWER PRODUCTS. ANY REPRODUCTION IN PART OR WHOLE WITHOUT THE WRITTEN PERMISSION OF ANDERSON POWER PRODUCTS IS PROHIBITED.

**Copyright 2011**

ANDERSON POWER PRODUCTS RESERVES THE RIGHT TO ALTER PRODUCT TYPES, THEIR TECHNICAL DATA, DIMENSION, STYLE AND ACCESSORIES WITHOUT PRIOR NOTIFICATION.



DIMENSIONS ARE IN:	INCH [MM]	<b>APPROVALS</b>			<b>ANDERSON POWER PRODUCTS</b>		
UNLESS OTHERWISE STATED		<b>DRAWN</b>			<b>TITLE</b> PP75/SB50 CONTACT FOR USE WITH #6 AWG MAX. LOW DETENT, CAT. NO. 1307		
TOLERANCES:		DJD	4/1/2010	<b>SIZE</b> A			
DECIMALS (INCH)	DECIMALS (MM)	CHECKED					<b>DWG NO.</b> 1C0608S8
.XX ±.02	.X ±.5	JET	4/1/2010	<b>REV.</b> 11			
ANGLES ±2°		MFG APPRV					<b>SCALE</b> NONE
SURFACE FINISH:		QC APPRV		<b>CADFILE</b> 01038			
MACHINED	128µin [3.2µ]	ENG APPRV					<b>SHEET</b> 1 OF 1
MOLDED	64µin [1.6µ]	LB	8/8/1973	<b>DO NOT MANUALLY UPDATE</b> <b>DO NOT SCALE</b>			
<b>MATERIAL:</b> COPPER ALLOY							<b>3rd ANGLE PROJECTION</b>
<b>FINISH:</b> SILVER PLATE							

REV.	DESCRIPTION	APPRV	DATE
11	ECN 2016-0095	CPD	10/7/2016
10	ECRN 15005: FIXED CADFILE TYPO	JHN	10/31/2011

REVISIONS