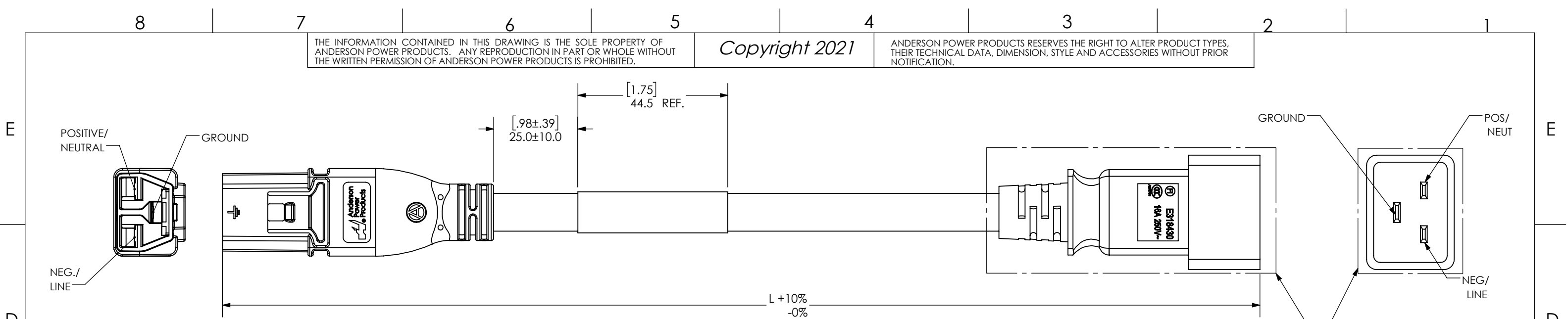


THE INFORMATION CONTAINED IN THIS DRAWING IS THE SOLE PROPERTY OF ANDERSON POWER PRODUCTS. ANY REPRODUCTION IN PART OR WHOLE WITHOUT THE WRITTEN PERMISSION OF ANDERSON POWER PRODUCTS IS PROHIBITED.

Copyright 2021

ANDERSON POWER PRODUCTS RESERVES THE RIGHT TO ALTER PRODUCT TYPES, THEIR TECHNICAL DATA, DIMENSION, STYLE AND ACCESSORIES WITHOUT PRIOR NOTIFICATION.

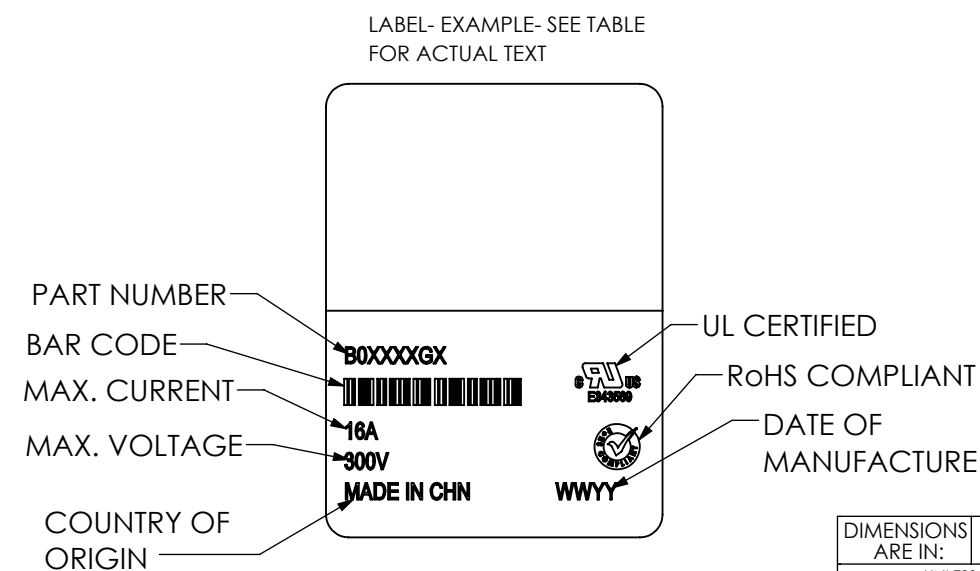


PLUG COMPLIES WITH IEC 60320- C20 CONFIGURATION. VISUAL REPRESENTATION IS FOR REFERENCE ONLY.

SDG CONNECTOR		CABLE		C20 CONNECTOR	
TYPE	SAF-D-GRID® SERIES (3-5958P2)	TYPE	SJT/H05VV-F	TYPE	IEC 60320 C20
APPROVAL(S)	cURus TO UL 1977, FILE# E26226	APPROVAL(S)	UL/CSA/VDE/CCC/NSW [1]	APPROVAL(S)	UL, FIMKO, CCC, NSW [1]
CURRENT	20A	CONDUCTOR SIZE / QTY.	14 AWG / 1.5mm ² - 3 COND	CURRENT	16A
VOLTAGE	400V	VOLTAGE RATING	300V	MAX VOLTAGE	250V
MAX TEMP	90°C	FLAMMABILITY / TEMP.	105°C	MAX TEMP	70°C (PIN)
CONTACTS	COPPER ALLOY, SILVER PLATED	JACKET	PVC, RED OR BLUE	CONTACTS	Ni PLATED BRASS
HOUSING	POLYCARBONATE, BLACK			HOUSING	RED OR BLUE
OVERMOLD	PVC, BLACK			OVERMOLD	RED OR BLUE

OVERALL RATINGS AND SPECIFICATIONS	
MAX VOLTAGE	250V
MAX CURRENT	16A
TEMPERATURE	70°C

PRODUCT NUMBERING AND LENGTHS			
PART NUMBER			
APP	COLOR	M	FT
2050KH1-RED-BK	RED	1	3.3
2050KH2-RED-BK	RED	2	6.6
2050KH3-RED-BK	RED	3	9.9
2050KH3R5-RED-BK	RED	3.5	11.5
2050KH4R5-RED-BK	RED	4.5	14.8
2050KH1-BLUE-BK	BLUE	1	3.3
2050KH2-BLUE-BK	BLUE	2	6.6
2050KH3-BLUE-BK	BLUE	3	9.9
2050KH3R5-BLUE-BK	BLUE	3.5	11.5
2050KH4R5-BLUE-BK	BLUE	4.5	14.8
2050KH5-RED-BK	RED	5	16.4
2050KH6-RED-BK	RED	6	19.7
2050KH5-BLUE-BK	BLUE	5	16.4
2050KH6-BLUE-BK	BLUE	6	19.7



- NOTES:
- ASSEMBLIES TO BE 100% CHECKED FOR CONTINUITY, POLARITY AND DIELECTRIC WITHSTAND VOLTAGE AT 2,500 VAC FOR 3 SECONDS.
 - PLUG CONTACTS SHALL PASS A TENSILE PULL PER IEC 60352-2.
 - RoHS AND REACH COMPLIANT
 - CORDS TO BE PACKAGED IN A POLYBAG WITH LABEL CONTAINING:

REV.	DESCRIPTION	APPRV	DATE
2	ECN 2023-0123 - ADDED 5 AND 6M LENGTHS	CPD	12/19/2023
1	ECN 2023-0013 - ADDED NSW APPROVAL & 3.5M CORDS	ACG	2/22/2023

DIMENSIONS ARE IN:	MM [INCH]	APPROVALS		ANDERSON POWER PRODUCTS			
UNLESS OTHERWISE STATED		DRAWN	CPD	2/2/2021	TITLE		
TOLERANCES:		CHECKED	CHS	3/16/2021	SDG 2050KH SERIES - SDG400 TO C20 ON, RED OR BLUE 14AWG SJT/1.5mm ² H05VV		
DECIMALS (INCH)	DECIMALS (MM)	ANGLES	PM APPRV	DSB			3/16/2021
.XX ± .02	.X ± .5	±2°	QC APPRV	UFN			3/17/2021
SURFACE FINISH:			ENG APPRV	JH			3/18/2021
MACHINED 3.2μ [128μin] ✓			FINISH:		SIZE	DWG NO.	
MOLDED 1.6μ [64μin] ✓			MATERIAL: SEE TABLE		B	B02706S2	
REV. 2			-CAD GENERATED DRAWING- DO NOT MANUALLY UPDATE DO NOT SCALE		SCALE	SHEET	
REV. 1			3rd ANGLE PROJECTION		NONE	05637	
REV. 0						1 OF 1	