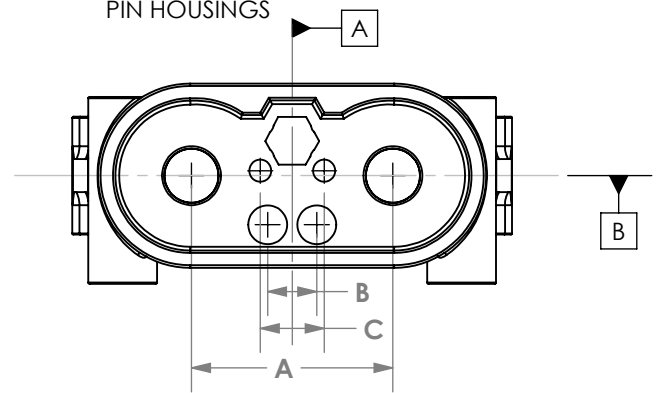


THE INFORMATION CONTAINED IN THIS DRAWING IS THE SOLE PROPERTY OF ANDERSON POWER PRODUCTS. ANY REPRODUCTION IN PART OR WHOLE WITHOUT THE WRITTEN PERMISSION OF ANDERSON POWER PRODUCTS IS PROHIBITED.

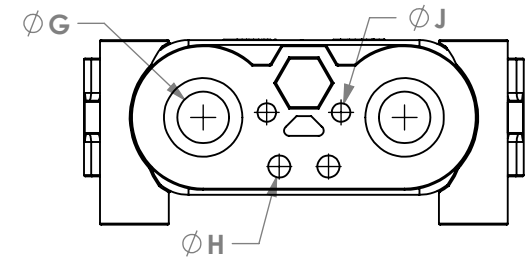
Copyright 2017

ANDERSON POWER PRODUCTS RESERVES THE RIGHT TO ALTER PRODUCT TYPES, THEIR TECHNICAL DATA, DIMENSIONS AND ACCESSORIES WITHOUT PRIOR NOTIFICATION.

PIN HOUSINGS

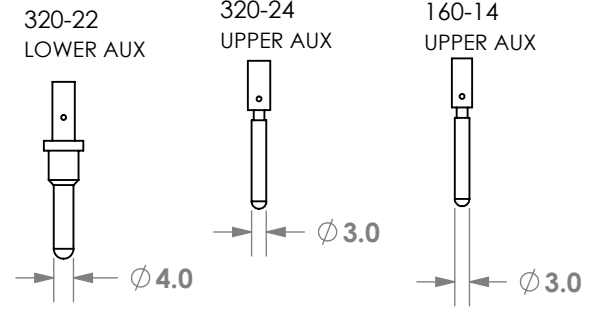


SERIES	A ±.3	B ±.2	C ±.2	F +0/-.36
E160	38.0	10.0	15.0	8.5
A160	38.0	10.0	15.0	8.5
E320	41.0	10.0	13.0	10.0
A320	41.0	10.0	15.0	10.0

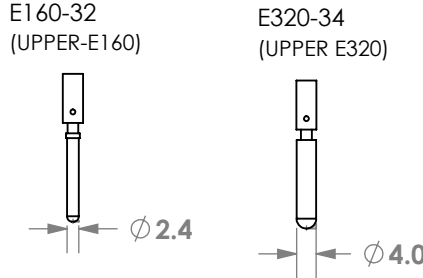


SERIES	G+.22/-0	H	J
E160	8.8	N/A (SQ)	3.6 ±.2
A160	9.0	4.5 ±.4	3.8 ±.4
E320	10.5	N/A (SQ)	4.5 ±.2
A320	10.5	4.4 ±.2	3.8 ±.4

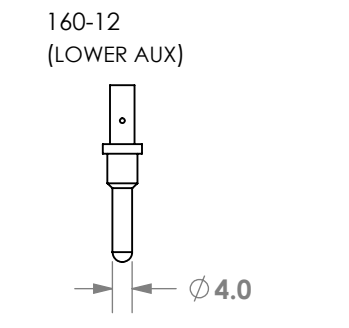
THESE CONTACTS FOR USE IN A SERIES ONLY



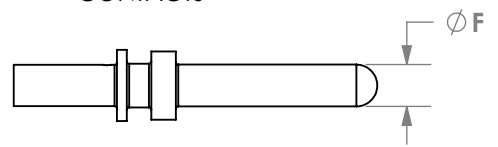
THESE CONTACTS FOR USE IN E SERIES ONLY



THIS CONTACT FOR USE IN A AND E SERIES, 160-320



ALL A SERIES AND E SERIES 160/320 POWER PIN CONTACTS



DIMENSIONS ARE IN:	MM [INCH]	APPROVALS	
UNLESS OTHERWISE STATED		DRAWN	
TOLERANCES:		CMS	11/9/2017
DECIMALS (INCH)	DECIMALS (MM)	CHECKED	
.XX ±.02	.X ±.5	CPD	11/9/2017
ANGLES ±2°		MKT APPRV	
SURFACE FINISH:		RW	11/9/2017
MACHINED	3.2µ [128µin]	QC APPRV	
MOLDED	1.6µ [64µin]	UFN	11/9/2017
MATERIAL:		ENG APPRV	
N/A		BP	11/9/2017
FINISH:			



TITLE
DIN E AND A SERIES PITCH DIMENSIONS 80-160-320

1	ECN 2020-0013 - ADDED SHEET 2 AND 80 SERIES	CPD	2/10/2020
REV.	DESCRIPTION	APPRV	DATE
REVISIONS			

-CAD GENERATED DRAWING-
DO NOT MANUALLY UPDATE
DO NOT SCALE

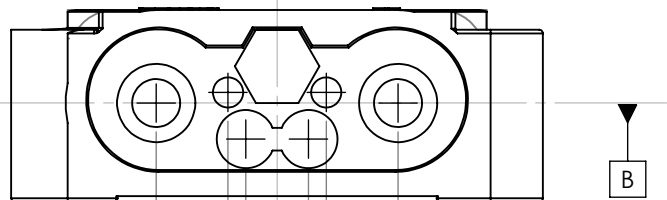
SIZE	DWG NO.	REV.
A	115928S1	1
SCALE	CADFILE	SHEET
NONE	05121	1 OF 2

THE INFORMATION CONTAINED IN THIS DRAWING IS THE SOLE PROPERTY OF ANDERSON POWER PRODUCTS. ANY REPRODUCTION IN PART OR WHOLE WITHOUT THE WRITTEN PERMISSION OF ANDERSON POWER PRODUCTS IS PROHIBITED.

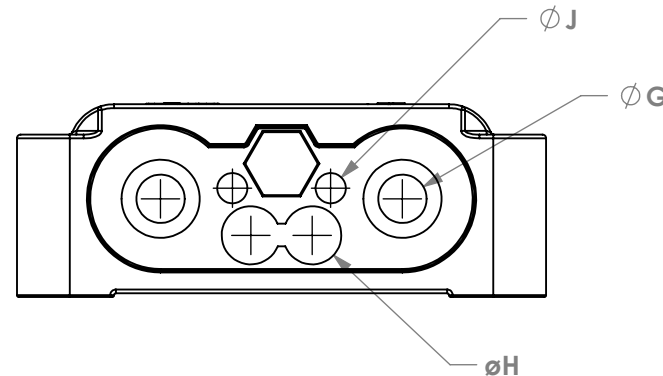
Copyright 2020

ANDERSON POWER PRODUCTS RESERVES THE RIGHT TO ALTER PRODUCT TYPES, THEIR TECHNICAL DATA, DIMENSION, STYLE AND ACCESSORIES WITHOUT PRIOR NOTIFICATION.

SOCKET HOUSINGS



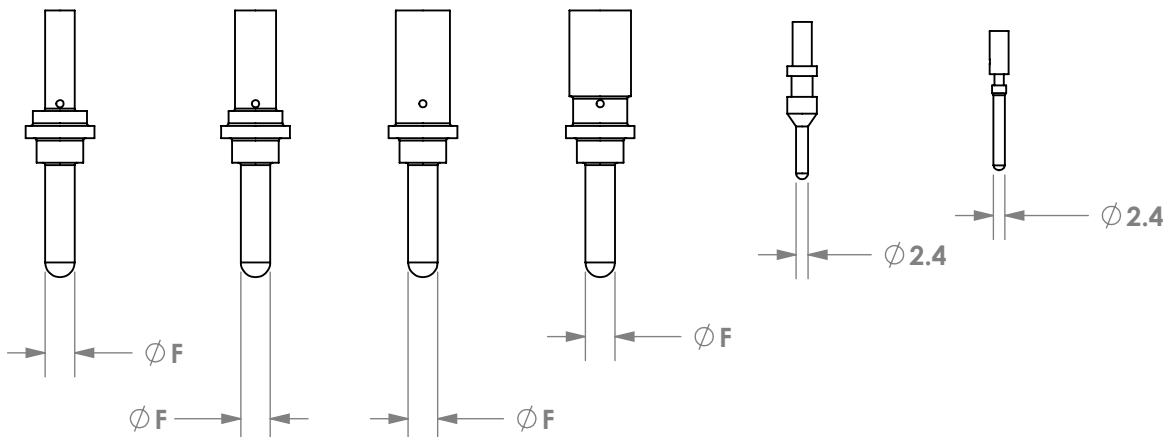
SERIES	A±.3	B±.2	C±.2	F+0/-.36
E80	32.0	8.3	13.0	6.0
A80	32.0	8.3	13.0	6.0



SERIES	G+.22/-0	H	J
E80	6.4	7.8±.2	4.0±.2
A80	6.4	7.8±.2	4.0±.2

THESE CONTACTS FOR USE IN A AND E SERIES

- 80-1010
POWER
- 80-1016
POWER
- 80-1025
POWER
- 80-1035
POWER
- E80-30
LOWER AUX.
- E80-32
UPPER AUX.



DIMENSIONS ARE IN: MM [INCH]		 ANDERSON POWER PRODUCTS
UNLESS OTHERWISE STATED		
TOLERANCES:		
DECIMALS (INCH)	DECIMALS (MM)	ANGLES
.XX ± .02	.X ± .5	±2°
SURFACE FINISH:		
MACHINED	3.2µ [128µin]	✓
MOLDED	1.6µ [64µin]	✓
MATERIAL: N/A		
FINISH:		
SIZE A	DWG NO. 115928S1	REV. 1
SCALE NONE	CADFILE 05121	SHEET 2 OF 2