

THE INFORMATION CONTAINED IN THIS DRAWING IS THE SOLE PROPERTY OF ANDERSON POWER PRODUCTS. ANY REPRODUCTION IN PART OR WHOLE WITHOUT THE WRITTEN PERMISSION OF ANDERSON POWER PRODUCTS IS PROHIBITED.

Copyright 2005

ANDERSON POWER PRODUCTS RESERVES THE RIGHT TO ALTER PRODUCT TYPES, THEIR TECHNICAL DATA, DIMENSION, STYLE AND ACCESSORIES WITHOUT PRIOR NOTIFICATION.

D

C

B

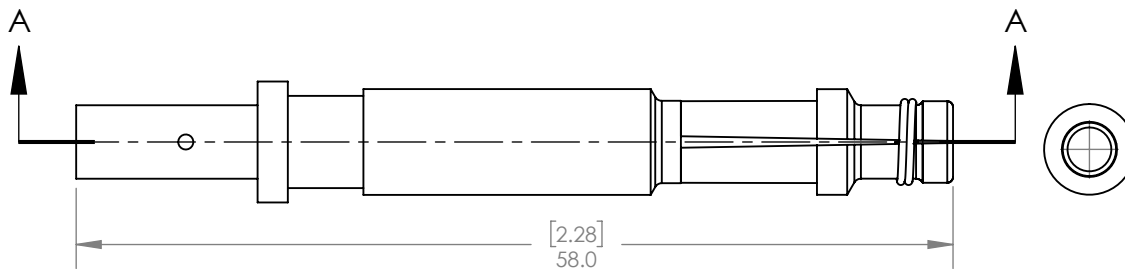
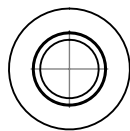
A

D

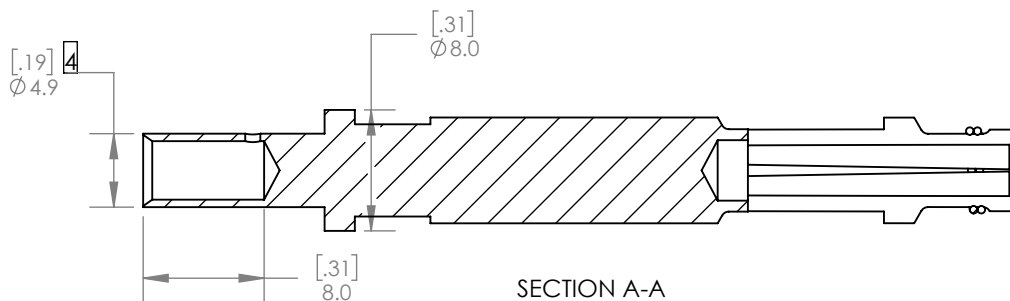
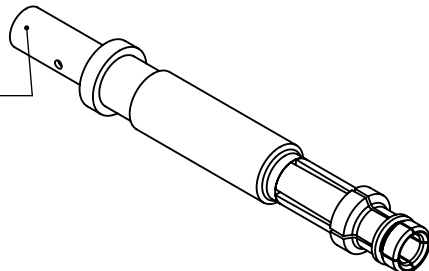
C

B

A



CRIMP BARREL



SECTION A-A
SCALE 2 : 1

REV.	DESCRIPTION	APPRV	DATE
4	ECN 2017-0036- DIA4.9 WAS 5.0, REMOVE ALT. CONSTRUCTION	CMS	3/31/17
3	ECRN 14596- CHANGE SPRING TO E320-39	CHB	4/12/10
2	ECRN 14310- ADD E160-31 NOTE	AMS	8/27/07
1	ECRN 14292- ADD ALTERNATE CONSTRUCTION	AMS	7/25/08

REVISIONS

DIMENSIONS ARE IN:	MM [INCH]	APPROVALS		 ANDERSON POWER PRODUCTS	
UNLESS OTHERWISE STATED		DRAWN	AMP 5/11/2005		
TOLERANCES:		CHECKED	DJD 5/11/2005		
DECIMALS (INCH) DECIMALS (MM) ANGLES .XX ± .015 .X ± .38 ± 5° .XXX ± .005 .XX ± .13		MFG APPRV	CHB 5/10/2005		
SURFACE FINISH:		QC APPRV	UFN 5/10/2005	TITLE EBC DIN 160/320 LOWER PILOT/AUX. SOCKET CAT. NO. 160-13 FOR 6mm WIRE	
MACHINED 3.2µ [128µin] ✓		ENG APPRV	DAM 5/10/2005		
MOLDED 1.6µ [64µin] ✓		SIZE	A		
MATERIAL: COPPER ALLOY FINISH: SILVER PLATE		DWG NO.	160-13S1	REV.	4
 3rd ANGLE PROJECTION		SCALE	1:1	CADFILE	02314
		-CAD GENERATED DRAWING- DO NOT MANUALLY UPDATE DO NOT SCALE		SHEET	1 OF 1