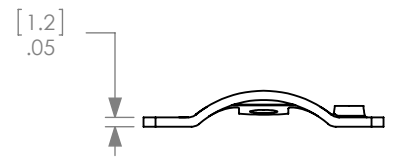
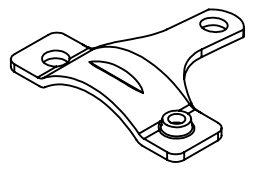
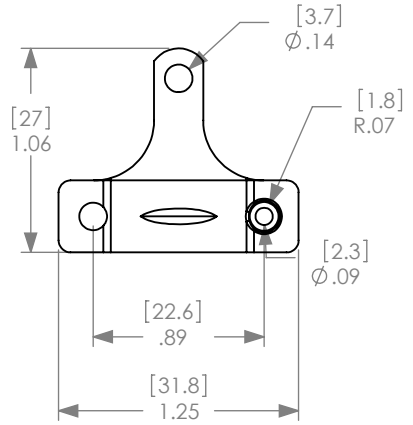


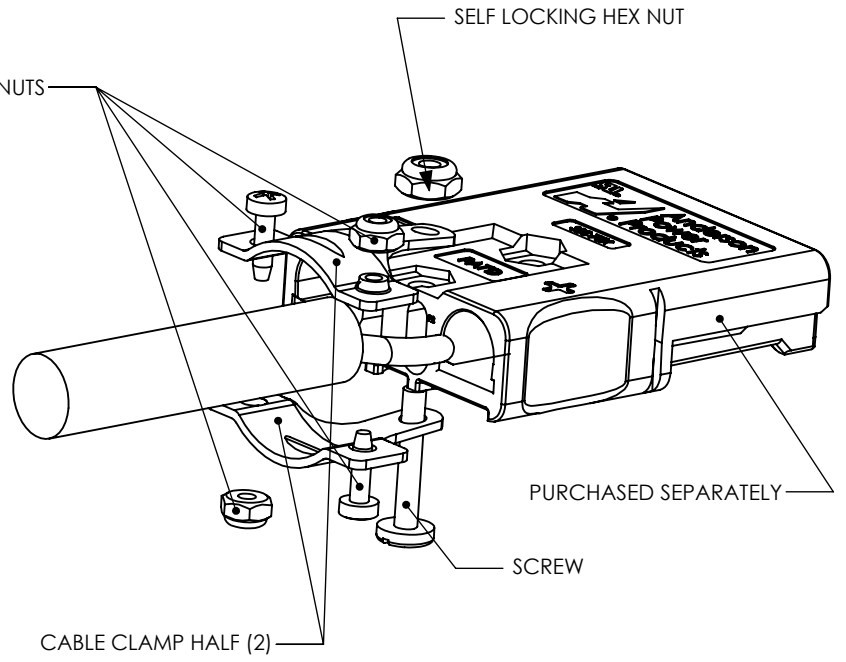
THE INFORMATION CONTAINED IN THIS DRAWING IS THE SOLE PROPERTY OF ANDERSON POWER PRODUCTS. ANY REPRODUCTION IN PART OR WHOLE WITHOUT THE WRITTEN PERMISSION OF ANDERSON POWER PRODUCTS IS PROHIBITED.

**Copyright 2011**

ANDERSON POWER PRODUCTS RESERVES THE RIGHT TO ALTER PRODUCT TYPES, THEIR TECHNICAL DATA, DIMENSION, STYLE AND ACCESSORIES WITHOUT PRIOR NOTIFICATION.



2 SCREWS WITH SELF LOCKING NUTS



MIN CLAMP WIDTH: .213in (5.41mm)  
 MAX CLAMP WIDTH .295in (7.49mm)

**P/N: 114878G1**

**NOTES:**

1. MATERIAL: STEEL, ZINC/YELLOW PLATE
2. HARDWARE KIT INCLUDES TWO SCREWS #4, TWO SELF LOCK NUTS & ONE LARGER SCREW #6 AND ONE SELF LOCK NUT.
3. USE WITH TWIN CONDUCTOR CABLE

DIMENSIONS ARE IN: MM [INCH]		<i>APPROVALS</i>		<b>ANDERSON POWER PRODUCTS</b>		
UNLESS OTHERWISE STATED		DRAWN	TWE	5/10/2011	<b>TITLE</b> SBS75X WITH 5905 TWIN CONNECTOR CLAMP	
TOLERANCES:		CHECKED	CMS	5/10/2011		
DECIMALS (INCH)	DECIMALS (MM)	ANGLES	MFG APPRV	CHB		5/11/2011
.XX ± .015	.X ± .38	±.5°	QC APPRV	HN		5/11/2011
.XXX ± .005	.XX ± .13		ENG APPRV	CHB_BD	5/11/2011	
SURFACE FINISH:		MATERIAL: SEE NOTES		FINISH:	SIZE A	
MACHINED 128 [3.2] ✓		MOLDED 64 [1.6] ✓			DWG NO. 114878S1	
					REV. 1	
					SCALE 1:1	
					CADFILE 03459	
					SHEET 1 OF 1	

1	DESCRIPTION	APPRV	DATE
1	ECRN-14906 WIRE CLAMP RANGE & P/N TYPO CORRECTION	TWE	5/11/11

REVISIONS